



*Annual Production Sale*

2023

AUGUST 4



6 PM CST | 2041 JAY AVENUE | GEORGE, IOWA 51237

[MOONCREEKANGUSFARM.COM](http://MOONCREEKANGUSFARM.COM)



# Annual Production Sale AUGUST 4, 2023 - 6 PM

Sale Address: 2041 Jay Ave, George, IA 51237

WATCH AND BID LIVE ON DV AUCTION!  
Cattle will sell on video screen at the sale site.

**DVAuction**  
Broadcasting Real-Time Auctions

Supper will be served sale night with entertainment!

## Welcome!

We would like to welcome you to our annual female production sale which will again be held at our farm headquarters located in George, IA. This year's offering will again feature a cross section of our breeding program consisting of donors, bred and open heifers, ET baby heifer calves along with their mothers, pregnant recipients carrying female pregnancies, and frozen embryos. The goals of our program remain the same, which is to produce problem free cattle in a moderate sized package.



**Korey, Val, Ross, Carter, and Brooklyn Krull**  
712-330-5459 | [MOONCREEKANGUSFARM.COM](http://MOONCREEKANGUSFARM.COM)

As you review the sale offering, you can quickly see we are working aggressively with two cow families in particular, the Ericas and the Isabels. We feel these cow families represent what is important in our breeding program. They represent a balanced EPD profile in an easy keeping, eye appealing package. This has been an exciting year for us as we continue to add to our genetic diversity headlined by the addition of Deep Creek Legitimate 203. This bull fits perfectly with our philosophy of balance and power. Look for his influence in our program.

We hope you can join us on August 4 in beautiful Northwest Iowa for a fun filled evening at Moon Creek Farms. If you are unable to attend in person, the sale will be broadcast on DV Auction with videos available for your viewing. Please do not hesitate to contact us prior to the sale with questions. You are also welcome to stop out and view the cattle at any time. Thank You for your consideration in our program.

*God Bless,*

## GENERAL SALE INFORMATION



### SALE STAFF

CHRIS EARL 630-675-6559  
KODY FLEEMAN 573-881-0117

### AUCTIONEER

WES TIEMANN 816-244-4462

### LIVESTOCK PRESS

Adam Conover, American Angus Association 816-676-8560  
Austin Brandt, Midwest Marketer 712-621-1829  
Mike Sorenson, Livestock Plus 641-745-7949

### UPDATES

All update sheets and announcements on sale day take precedence over this written material.

### TERMS

Cattle will sell under the standard terms of American Angus Association.

### TRUCKING

Trucking can be arranged with reliable firms if you need assistance.

# Deep Creek Legitimate 203

AAA 20509691 • DOB 01/05/22



Owned by: Moon Creek Angus, IA, Hansine Ranch, SD, Hoover Angus, IA



*sire* Myers Fair-N-Square M39

Woodhill Blueprint  
**Myers Fair-N-Square M39**  
 Myers Miss Beauty M136  
 Basin Rainmaker 4404  
**Deep Creek Rain Lass 013**  
 Deep Creek MP Lass 933#



Connealy Confidence Plus#  
 Woodhill Evergreen Z291-B233  
 Connealy Thunder#  
 Myers Miss Beauty M476#  
 Basin Rainmaker 2704  
 Basin Joy 1036  
 Ma & Pa Feature Presentation  
 Deep Creek 193 Lass 516

- The \$105,000 sale topper of the 2023 Deep Creek Angus Ranch Sale.
- A thick, dense made bull with a super sound structure.
- 126 Weaning ratio @ 931 pounds and a 123 Yearling ratio @ 1493 and an 81 pound BW.
- Good footed, deep bodied and wider chested with extra length of body.
- With his pathfinder grandam posting 10 WW@103, we think cow power and longevity are in his blood.

CED	BW	WW	YW	SC	HP	MILK	DOC	CLAW	ANGLE	PAP	CW	MARB	RE	FAT	\$M	\$B	\$C
5	1.4	91	148	0.43	14.1	32	18	0.41	0.43	0.34	70	0.89	0.90	0.004	65	180	298
65%	55%	2%	10%	80%	30%	15%	55%	20%	25%	30%	10%	25%	15%	40%	50%	10%	10%

ANGUS GS	CED	BW	WW	YW	DMI	YH	SC	DOC	CLAW	ANGLE	PAP	HS	HP	CEM	MILK	MW	MH	CW	MARB	RE	FAT	TEND
	53	46	3	29	60	21	54	78	16	40	33	61	28	67	41	9	22	8	24	7	42	80



# *Moon Creek Isabel* L1619



*Power & Ppretty*

Ratified x Isabel G1172



**1** **Moon Creek Isabel L1619**  
 COW | REG 20652563 | DOB 1/19/23 | TATTOO L1619

Poss Rawhide  
 Poss Ratified  
 Poss Rita 5116#  
 Spring Cove Reno 4021#  
 Baldridge Isabel G1172  
 Baldridge Isabel D753

Poss Maverick  
 Poss Blueblood 6502  
 Connealy Uptown 098E#  
 Rita 12D8 of 5F56 Rito 5M2  
 KM Broken Bow 002#  
 Spring Cove Liza 021  
 Mill Bar Hickok 7242#  
 Baldridge Isabel Y69

CED	BW	WW	YW	SC	HP	MILK	DOC										
4	2.8	81	135	1.10	16.0	24	29										
		10%	15%		15%		10%										
CLAW	ANGLE	PAP	CW	MARB	RE	FAT	\$M	\$B	\$C								
0.56	0.56	3.41	60	1.24	0.88	0.002	80	189	325								
			25%	10%	20%		15%	10%	3%								
CED	BW	WW	YW	DMI	YH	SC	DOC	HP	CEM	MLK	MW	MH	CW	MRB	RE	FAT	TEND
91	96	7	27	68	90	39	11	10	6	75	43	77	14	6	16	42	88



Baldridge Isabel D753 Granddam of Lot 1



Baldridge Isabel G1172 Donor Dam of Lot 1

*Moon Creek Isabel L1619 is the much-anticipated Ratified X Isabel that we had such high hopes for in regards to stacking together a powerful phenotype that runs generations deep. This female is the kind to tie to for body depth, power, and still be so pretty and well made in her angles. Her dam is the direct daughter of the \$160,000 Baldridge Isabel D753 owned by Shady Brook Angus. She produced two daughters by Confidence Plus who sold for \$40,000 each in the 2021 Baldridge Performance Female Sale purchased by Riverbend Ranches and Moon Creek. Eight more maternal sisters to this dam have averaged \$21,285 with seven sons averaging \$42,857.*



**1A**

**MOON CREEK ISABEL L1606**

**1A**

**Moon Creek Isabel L1606**

**COW | REG 20652523 | DOB 1/11/23 | TATTOO L1606**

Poss Rawhide  
**Poss Ratified**  
 Poss Rita 5116#  
 Spring Cove Reno 4021#  
**Baldrige Isabel G1172**  
 Baldrige Isabel D753

Poss Maverick  
 Poss Blueblood 6502  
 Connealy Uptown 098E#  
 Rita 12D8 of 5F56 Rito 5M2  
 KM Broken Bow 002#  
 Spring Cove Liza 021  
 Mill Bar Hickok 7242#  
 Baldrige Isabel Y69

CED	BW	WW	YW	SC	HP	MILK	DOC										
9	0.2	77	137	1.10	13.9	34	35										
30%	30%	15%	15%		30%	10%	1%										
CLAW	ANGLE	PAP	CW	MARB	RE	FAT	\$M	\$B	\$C								
0.59	0.62	0.93	66	1.21	0.50	0.050	67	183	304								
			15%	10%				10%	10%								
CED	BW	WW	YW	DMI	YH	SC	DOC	HP	CEM	MLK	MW	MH	CW	MRB	RE	FAT	TEND
45	36	10	10	97	81	31	3	32	5	20	18	42	9	5	70	94	70



**Baldrige Isabel G1173** Full sister to the dam of Lot 1s.

Sold for \$15,000 to Raven Angus, SD in our 2022 Sale.

*Powerful Pedigree  
 & Maternally Focused*



1B

MOON CREEK ISABEL L1631

1B

### Moon Creek Isabel L1631

COW | REG 20649569 | DOB 1/23/23 | TATTOO L1631

Cherry Creek Land Grant  
**Connealy Clarity**  
 Breshie of Conanga 6988  
 Spring Cove Reno 4021#  
**Baldrige Isabel 61172**  
 Baldrige Isabel D753

K C F Bennett Homestead#  
 Cherry Crk Eva B27 M  
 Connealy Confidence Plus#  
 Brelly of Conanga 367  
 KM Broken Bow 002#  
 Spring Cove Liza 021  
 Mill Bar Hickok 7242#  
 Baldrige Isabel Y69

CED	BW	WW	YW	SC	HP	MILK	DOC										
10	0.8	76	130	1.30	12.6	22	29										
20%		15%	20%	30%			10%										
CLAW	ANGLE	PAP	CW	MARB	RE	FAT	SM	\$B	SC								
0.32	0.46	4.13	52	1.13	0.82	-0.023	84	173	308								
3%			15%	30%	15%	10%	15%	10%									
CED	BW	WW	YW	DMI	YH	SC	DOC	HP	CEM	MLK	MW	MH	CW	MRB	RE	FAT	TEND
23	45	17	34	68	88	11	15	49	8	86	35	61	27	8	17	14	28



Moon Creek Clarity K1427 Full brother in blood to Lot 1B.

Sold in the 2023 Bull Sale



Moon Creek Identified J1320 Maternal Brother to Lot 1s.

Sold in the 2023 Bull Sale

*Deep, Broody,  
 & Easy Keeping*

# *Moon Creek Isabel* L1602



*First chance at Remington heifer*

**THICK MADE, GOOD FRONTED, REAL PERFORMANCE.**





**2** **Moon Creek Isabel L1602**

COW | REG 20656530 | DOB 1/12/23 | TATTOO L1602

Connealy Clarity  
**Poss Remington**  
 Poss Blueblood 6502  
 Spring Cove Reno 4021#  
**Baldrige Isabel 61170**  
 Baldrige Isabel D753

Cherry Creek Land Grant  
 Breshie of Conanga 6988  
 Poss Easy Impact 0119  
 Poss Blueblood 920  
 KM Broken Bow 002#  
 Spring Cove Liza 021  
 Mill Bar Hickok 7242#  
 Baldrige Isabel Y69

CEU	BW	VW	YW	SC	HP	MILK	DOC
5	1.6	88	148	0.70	17.4	29	30
		3%	5%		5%	30%	10%

CLAW	ANGLE	PAP	CW	MARB	RE	FAT	SM	SB	SC
0.54	0.57	1.99	66	1.16	0.72	0.036	81	178	312
			15%	15%			10%	10%	5%

CEU	BW	VW	YW	DMI	YH	SC	DOC	HP	CEM	MLK	MW	MH	CW	MRB	RE	FAT	TEND
48	51	1	7	98	21	48	12	6	4	22	11	34	5	4	20	85	22



Baldrige Isabel 61170 Donor Dam of Lot 2



Moon Creek Isabel K1429 Maternal Sister to Lot 2

Sold to Smith Valley Angus in 2022 Sale

*Moon Creek Isabel L1602 will be the first opportunity to capture the highly anticipated son of Clarity and Poss Blueblood 6502, Poss Remington. Along with Galaxy Beef, Pine View Angus, Mead Farms, Valley Oaks Angus, Haerr Farms, Poss Angus, and Crooked Creek Angus we own this herd sire and collectively agree that these are the ones that stood out since calving this spring! With enough calves on the ground, we confidently think this is the Clarity son that fix's top lines and gives more punch with more muscle.*

# Baldrige Isabel G795 DONOR DAM OF LOT 3



3

## Don Julio x G795

*Pregnancy*

<p>Poss Deadwood RRR Don Julio R2161 RRR Isabel R2838 Connealy Confidence Plus# Baldrige Isabel G795 Baldrige Isabel D753</p>	<p>Poss Maverick Poss Ellunamere 399 Spring Cove Reno 4021# Baldrige Isabel C773 Connealy Confidence 0100# Elbanna of Conanga 1209 Mill Bar Hickok 7242# Baldrige Isabel Y69</p>
---	--

	CED	BW	WW	YW	SC	HP	MILK	DOC		
SIRE	10	0.4	78	147	1.30	14.4	34	25		
	CLAW	ANGLE	PAP	CW	MARB	RE	FAT	\$M	\$B	\$C
	0.47	0.38	3.15	86	1.51	1.18	-0.015	68	250	392

	CED	BW	WW	YW	SC	HP	MILK	DOC		
DAM	8	1.0	81	143	0.94	9.8	31	31		
	CLAW	ANGLE	PAP	CW	MARB	RE	FAT	\$M	\$B	\$C
	0.48	0.44	4.54	56	0.99	0.86	0.034	63	167	280

*Due 3-1-24*



RRR Don Julio R2161 Sire of Lot 3 Pregnancy

Baldrige Isabel G795 is the model Confidence Plus daughter who commanded \$40,000 in the 2022 Baldrige Female Sale. Her full sister brought that same value to Riverbend Ranches in 2021. The exciting mating to Don Julio will be rare and hard to find. As he only sold 10 straws of semen for the Spring 23 breeding season and averaged \$7,500 per straw. He averages in the top 18% when you combine all his EPD's and Index's together. This would be one of the great opportunities to capture Isabel on the top and bottom side of a pedigree.

# Don Julio x Isabel G795

## PREGNANCY

# Baldrige Isabel F047

DONOR DAM OF LOT 4



4

## Red State x F047

*Pregnancy*

HPCA Vercingetorix  
**Pine View Red State**  
 Pine View Ruby C001

Connealy Confidence Plus#  
**Baldrige Isabel F047**  
 Baldrige Isabel B082

G A R Ashland  
 H P C A Sure Fire P245  
 baldrige Xpand x743  
 44 Ruby 2225

Connealy Confidence 0100#  
 Elbanna of Conanga 1209  
 G A R Prophet#  
 Baldrige Isabel Y69

SIRE		CED	BW	WW	YW	SC	HP	MILK	DOC
		10	0.7	84	158	0.40	10.7	24	18
CLAW ANGLE		PAP	CW	MARB	RE	FAT	\$M	\$B	\$C
0.50 0.40		-2.51	91	1.15	1.34	-0.009	58	230	356
DAM		CED	BW	WW	YW	SC	HP	MILK	DOC
		5	2.6	99	170	0.14	14.6	25	29
CLAW ANGLE		PAP	CW	MARB	RE	FAT	\$M	\$B	\$C
0.38 0.38		1.92	80	0.96	0.81	0.048	86	187	329

Due 2-11-24



Pine View Red State \$140,000 Sire of Lot 4

There is little left to prove for Baldrige Isabel F047 as the full sister to Sterling Pacific, Baldrige Pappy and the mother of Baldrige Jordan. Her last 6 flushes or pregnancies at public auction have averaged \$46,000. Her 9 live lots at Baldrige sales have averaged \$37,000. She has been identified as one of the most prolific flushing donors in the breed as she has surpassed \$200,000 in egg sales in less than two years. Pine View Red State is one of the most impressive bulls to highlight the 2023 Spring sale season by both pedigree, data, and a boldly impressive phenotype.

# Red State x Isabel F047

**PREGNANCY**

# Pine View Rita E093

DONOR DAM OF LOT 5



Pine View Red State \$140,000 Sire of Lot 4

5

## Red State x E093

*Pregnancy*

HPCA Vercingetorix  
**Pine View Red State**  
 Pine View Ruby C001  
 Mill Brae Identified 4031#  
**Pine View Rita E093**  
 G A R Prophet 1463

G A R Ashland  
 H P C A Sure Fire P245  
 baldridge Xpand x743  
 44 Ruby 2225  
 Koupals B&B Identity#  
 Mill Brae Pro Blackcap 1092  
 G A R Prophet#  
 G A R New Day 3070

SIRE		CED	BW	WW	YW	SC	HP	MILK	DOC		
		10	0.7	84	158	0.40	10.7	24	18		
DAM		CLAW	ANGLE	PAP	CW	MARB	RE	FAT	SM	SB	SC
		0.50	0.40	-2.51	91	1.15	1.34	-0.009	58	230	356
SIRE		CED	BW	WW	YW	SC	HP	MILK	DOC		
		9	0.6	77	141	0.77	7.2	21	25		
DAM		CLAW	ANGLE	PAP	CW	MARB	RE	FAT	SM	SB	SC
		0.47	0.39	3.84	69	1.79	0.93	0.060	87	234	390

Due 2-11-24



WW \$175,000 daughter of E093  
 Owned by Lancaster Angus, TN

*Pine View Rita E093 has risen to Angus super status as fast as any we have worked with. She is the \$600,000 valued donor for GMC Angus and has a \$400,000 valued daughter at Wilks and Double Barrel as well as a daughter who brought \$175,000 to Lancaster Angus in TN. She has generated 1.2 million at public auction with more to add private treaty. Her ability to jump the data and keep the phenotype is what drives her popularity. Matched to the super up and coming \$140,000 sire, Red State, will be a big hit.*



DBA Rita 1034 \$400,000 valued daughter of E093  
 Owned by Wilks Ranch & Double Barrel Angus

# Erica of Ellston X85

DONOR DAM OF LOT 6



6

## Legitimate x X85

*Pregnancy*

Myers Fair-N-Square M39  
**Deep Creek Legitimate 203**  
 Deep Creek Rain Lass 013  
 Hoover No Doubt  
**Erica of Ellston X85**  
 Erica of Ellston S7#

Woodhill Blueprint  
 Myers Miss Beauty M136  
 Basin Rainmaker 4404  
 Deep Creek MP Lass 933#  
 Mogck Bullseye#  
 Miss Blackcap Ellston J2  
 Baldrige 38 Special#  
 Erica of Ellston L5

SIRE	CED	BW	WW	YW	SC	HP	MILK	DOC		
	5	1.4	91	148	0.43	13.8	31	17		
CLAW	ANGLE	PAP	CW	MARB	RE	FAT	\$M	\$B	\$C	
	0.41	0.43	0.34	70	0.89	0.90	0.005	64	180	297

DAM	CED	BW	WW	YW	SC	HP	MILK	DOC		
	-4	3.8	86	167	1.43	13.4	33	28		
CLAW	ANGLE	PAP	CW	MARB	RE	FAT	\$M	\$B	\$C	
	0.49	0.43	2.55	81	0.96	1.05	-0.016	49	200	308

Due 1-10-24



**Deep Creek Legitimate \$105,000 Herdsire**

owned by Moon Creek, Hansine Ranch, and Hoover Angus

*This division of pregnancies are by the Erica cow family that is responsible for a big chunk of this herd. Stemming back to the most prominent cow of the Hoover program, Erica of Ellston G366, whose sons and daughters have been big revenue producers. In this program we have had R65, G1156, X85, Z37, H1052, and 813F in the donor pen who are all Erica daughters and fall close in line behind, Ellston L5, the daughter of G366 owned by Hoover and Baldrige. They are all so similar in type and kind that its easy to dive hard into this cow family. Legitimate is the \$105,000 top seller from Deep Creek Angus this year and was a highly acclaimed sire for his incredible phenotype. Owned with Hoover Angus this bull has sold a limited amount of semen for the '23 breeding season and will be opened back up this fall. This is a like on like mate that will result in maternal power and consistency.*



**Erica of Ellston Z37 Full Sister to X85**

# Erica of Ellston R65

DONOR DAM OF LOT 7



RRR Don Julio R2161

7

## Don Julio x R65

*Pregnancy*

Poss Deadwood  
**RRR Don Julio R2161**  
 RRR Isabel R2838  
 Bruns Top Cut 373  
**Erica of Ellston R65**  
 Erica of Ellston L5

Poss Maverick  
 Poss Ellunamere 399  
 Spring Cove Reno 4021#  
 Baldridge Isabel C773  
 Bruns Uppercut 610  
 Dakota Miss 669 Baf  
 Connealy Counselor  
 Erica of Ellston G366

SIRE		CED	BW	WW	YW	SC	HP	MILK	DOC		
		10	0.4	78	147	1.30	14.4	34	25		
DAM		CLAW	ANGLE	PAP	CW	MARB	RE	FAT	SM	SB	SC
		0.47	0.38	3.15	86	1.51	1.18	-0.015	68	250	392
		CED	BW	WW	YW	SC	HP	MILK	DOC		
		12	0.1	61	112	1.32	12.7	43	19		
		CLAW	ANGLE	PAP	CW	MARB	RE	FAT	SM	SB	SC
		0.52	0.65	-0.29	65	0.81	1.05	0.002	60	178	291

Due 3-1-24



Moon Creek Erica of RR K1407 \$22,000 Daughter of R65  
 Sold to Deep Creek in our 2022 Bull Sale

As you study our Erica family its R65 who really planted the sword as she is the dam of 813F, H1052, and G1156 donors. Daughters by Clarity, Confidence Plus, and Reno were highlights of the 2022 sale. R65 is a member of the "Fab Five" flush at Hoovers and was the top pick of the 2018 sale. That same year her sister, R96, the mother of Erica of Ellston T220, brought \$48,000. When mated to the most impressive phontype son of Deadwood with his big data we think this pregnancy is a no miss opportunity.



Moon Creek Erica of RR G1156  
 Daughter of R65

# Poss Remington

AAA 20060430 • DOB 01/19/21



**Owned by:** Galaxy Beef, MO, Mead Farms, MO, Valley Oaks, MO, Pine View Angus, IA, Moon Creek Angus, IA, Haerr Farms, MO, and Crooked Creek, MO

—| Cherry Creek Land Grant  
**Connealy Clarity**

—| Breshie of Conanga 6988

—| Poss Easy Impact 0119  
**Poss Blueblood 6502**

—| Poss Blueblood 920

K C F Bennett Homestead#  
Cherry Crk Eva B27 M  
Connealy Confidence Plus#  
Brelly of Conanga 367  
Poss Total Impact 745#  
Poss Elmaretta 736  
Connealy All Around#  
Poss Blueblood Lady 5114



*dam* Poss Blueblood 6502

- Remington has the cowman's look and muscle and is excellent footed.
- He could take his outcross pedigree to an elite level of acceptance.
- Very balanced in his EPD profile that also matches his balance in the pasture.

CED	BW	WW	YW	SC	HP	MILK	DOC	CLAW	ANGLE	PAP	CW	MARB	RE	FAT	\$M	\$B	\$C					
8	0.5	82	139	0.51	17.1	31	28	0.36	0.44	2.32	77	0.94	0.81	0.021	97	193	347					
35%	35%	10%	10%	75%	4%	20%	10%	10%	30%	75%	3%	20%	25%	65%	1%	4%	1%					
ANGUSGS	CED	BW	WW	YW	DMI	YH	SC	DOC	CLAW	ANGLE	PAP	HS	HP	CEM	MILK	MW	MH	CW	MARB	RE	FAT	TEND
	34	25	6	7	80	49	53	4	23	41	90	26	4	92	26	24	27	3	9	11	67	27



# Moon Creek Erica of RR H1052

## PREGNANCIES BY



RRR Don Julio R2161



Deep Creek Legitimate

## HEIFER BY



Hart Showcase 1082



Moon Creek Coherent K1411

*\$20,000 Son of Erica of RR H1052, sold to TK Angus, NE in 2023 Bull Sale.*







**8** Don Julio x H1052 *Pregnancy*

Poss Deadwood  
**RRR Don Julio R2161**  
 RRR Isabel R2838  
 Baldrige Hombre D748  
**Moon Creek Erica of RR H1052**  
 Moon Creek Erica of RR 813F

Poss Maverick  
 Poss Ellunamere 399  
 Spring Cove Reno 4021#  
 Baldrige Isabel C773  
 Mill Bar Hickok 7242  
 Baldrige Isabel Y69  
 Baldrige 38 Special  
 Erica of Ellston R65

**SIRE**

CED	BW	WW	YW	SC	HP	MILK	DOC		
10	0.4	78	147	1.30	14.4	34	25		
CLAW	ANGLE	PAP	CW	MARB	RE	FAT	\$M	\$B	\$C
0.47	0.38	3.15	86	1.51	1.18	-0.015	68	250	392

**DAM**

CED	BW	WW	YW	SC	HP	MILK	DOC		
6	1.2	90	164	0.87	13.4	33	29		
CLAW	ANGLE	PAP	CW	MARB	RE	FAT	\$M	\$B	\$C
0.46	0.48	0.17	78	0.75	0.84	0.012	64	165	278

Due 3-1-24

**8A** Legitimate x H1052 *Pregnancy*

Myers Fair-N-Square M39  
**Deep Creek Legitimate 203**  
 Deep Creek Rain Lass 013  
 Baldrige Hombre D748  
**Moon Creek Erica of RR H1052**  
 Moon Creek Erica of RR 813F

Woodhill Blueprint  
 Myers Miss Beauty M136  
 Basin Rainmaker 4404  
 Deep Creek MP Lass 933  
 Mill Bar Hickok 7242#  
 Baldrige Isabel Y69  
 Baldrige 38 Special#  
 Erica of Ellston R65

**SIRE**

CED	BW	WW	YW	SC	HP	MILK	DOC		
5	1.4	91	148	0.43	13.8	31	17		
CLAW	ANGLE	PAP	CW	MARB	RE	FAT	\$M	\$B	\$C
0.41	0.43	0.34	70	0.89	0.90	0.005	64	180	297

**DAM**

CED	BW	WW	YW	SC	HP	MILK	DOC		
6	1.2	90	164	0.87	13.4	33	29		
CLAW	ANGLE	PAP	CW	MARB	RE	FAT	\$M	\$B	\$C
0.46	0.48	0.17	78	0.75	0.84	0.012	64	165	278

Due 1-10-24

**8B** Moon Creek Erica Of RR L1714

**COW** | REG 20682300 | DOB 6/15/23 | TATTOO L1714

Musgrave 316 Exclusive  
**Hart Showcase 1082**  
 Hart Whitney 3206  
 Baldrige Hombre D748  
**Moon Creek Erica of RR H1052**  
 Moon Creek Erica of RR 813F

LD Capitalist 316#  
 Musgrave Prim Lassie 163-386  
 Connealy Cavalry 1149#  
 Hart Whitney 0244T  
 Mill Bar Hickok 7242#  
 Baldrige Isabel Y69  
 Baldrige 38 Special#  
 Erica of Ellston R65

CED	BW	WW	YW	SC	HP	MILK	DOC		
8	0.5	90	159	1.10	15.6	31	26		
		2%	2%		15%	20%	20%		
CLAW	ANGLE	PAP	CW	MARB	RE	FAT	\$M	\$B	\$C
0.48	0.51	0.77	75	0.98	0.85	0.023	72	176	300
			5%	20%	25%		30%	15%	10%

CED	BW	WW	YW	DMI	YH	SC	DOC	HP	CEM	MLK	MW	MH	CW	MRB	RE	FAT	TEND



Genomic data pending.



9

MOON CREEK ERICA OF RR K1463

9 Moon Creek Erica of RR K1463

COW | REG 20347108 | DOB 1/14/22 | TATTOO K1463

Tehama Upward Y238  
 Tehama Tahoe B767#  
 Tehama Mary Blackbird Y684  
 Connealy Confidence Plus#  
 Moon Creek Erica of RR H1025  
 Erica of Ellston R65

Sitz Upward 307R#  
 Tehama Elite Blackbird T735  
 S A V Final Answer 0035#  
 Tehama Mary Blackbird T073  
 Connealy Confidence 0100#  
 Elbanna of Conanga 1209  
 Bruns Top Cut 373#  
 Erica of Ellston L5

CED	BW	WW	YW	SC	HP	MILK	DOC		
5	1.7	72	126	1.30	13.9	31	21		
		25%	25%	25%	30%	20%			
CLAW	ANGLE	PAP	CW	MARB	RE	FAT	\$M	\$B	\$C
0.48	0.53	2.99	60	0.86	0.93	-0.007	63	169	282
			25%	30%	15%	30%		20%	20%

CED	BW	WW	YW	DMI	YH	SC	DOC	HP	CEM	MLK	MW	MH	CW	MRB	RE	FAT	TEND
64	76	10	19	94	28	13	49	22	21	29	17	26	9	21	9	37	69



Exposed to Deep Creek Legitimate 203 through 5-22-23 then Moon Creek Coherent through 6-28-23.



Moon Creek Erica of RR H1025 Dam of Lot 9



Erica of Ellston R65 Granddam of Lot 9

Watch and Bid Live!

**DVAuction**  
 Broadcasting Real-Time Auctions

The sale will be broadcast live on DVAuction.com. Please register to bid at least 24 hours in advance of the sale. Videos will be available approximately two weeks prior to sale day.



# Moon Creek Erica of RR 813F

DONOR DAM OF LOT 10-10B



Moon Creek Alternative J1326  
813F Son sold in 2023 Bull Sale

**10** **Moon Creek Erica Of RR L1638**  
**COW** | REG 20649635 | DOB 1/26/23 | TATTOO L1638

Cherry Creek Land Grant  
**Connealy Clarity**  
 Breshie of Conanga 6988  
 Baldrige 38 Special#  
**Moon Creek Erica of RR 813F**  
 Erica of Ellston R65

K C F Bennett Homestead#  
 Cherry Crk Eva B27 M  
 Connealy Confidence Plus#  
 Brelly of Conanga 367  
 EF Commando 1366#  
 Baldrige Isabel Y69  
 Bruns Top Cut 373#  
 Erica of Ellston L5

CED	BW	WW	YW	SC	HP	MILK	DOC
6	1.7	80	143	1.30	10.7	19	26
		10%	10%	25%			20%

CLAW	ANGLE	PAP	CW	MARB	RE	FAT	SM	SB	SC
0.36	0.39	5.34	70	1.02	1.03	0.022	72	191	320
10%	15%		10%	20%	10%		30%	10%	4%

CED	BW	WW	YW	DMI	YH	SC	DOC	HP	CEM	MLK	MW	MH	CW	MRB	RE	FAT	TEND
44	59	8	7	93	24	8	18	48	12	93	11	28	4	12	3	64	42

**HDSOK**



**10** **MOON CREEK ERICA OF RR L1638**

**10A** **Moon Creek Erica Of RR L1703**  
**COW** | REG 20682322 | DOB 6/13/23 | TATTOO L1703

Musgrave 316 Exclusive  
**Hart Showcase 1082**  
 Hart Whitney 3206  
 Baldrige 38 Special#  
**Moon Creek Erica of RR 813F**  
 Erica of Ellston R65

LD Capitalist 316#  
 Musgrave Prim Lassie 163-386  
 Connealy Cavalry 1149#  
 Hart Whitney 0244T  
 EF Commando 1366#  
 Baldrige Isabel Y69  
 Bruns Top Cut 373#  
 Erica of Ellston L5

CED	BW	WW	YW	SC	HP	MILK	DOC
10	-0.1	83	143	1.00	16.1	32	22
		25%	5%	10%		15%	15%

CLAW	ANGLE	PAP	CW	MARB	RE	FAT	SM	SB	SC
0.45	0.53	1.72	66	1.09	0.95	0.028	80	179	312
			15%	15%	15%		15%	10%	5%

CED	BW	WW	YW	DMI	YH	SC	DOC	HP	CEM	MLK	MW	MH	CW	MRB	RE	FAT	TEND

**HDSOK**

*Genomic data pending.*

**10B** **Legitimate x 813F** *Pregnancy*

Myers Fair-N-Square M39  
**Deep Creek Legitimate 203**  
 Deep Creek Rain Lass 013  
 Baldrige 38 Special#  
**Moon Creek Erica of RR 813F**  
 Erica of Ellston R65

Woodhill Blueprint  
 Myers Miss Beauty M136  
 Basin Rainmaker 4404  
 Deep Creek MP Lass 933  
 EF Commando 1366#  
 Baldrige Isabel Y69  
 Bruns Top Cut 373#  
 Erica of Ellston L5

CED	BW	WW	YW	SC	HP	MILK	DOC
5	1.4	91	148	0.43	13.8	31	17

CLAW	ANGLE	PAP	CW	MARB	RE	FAT	SM	SB	SC
0.41	0.43	0.34	70	0.89	0.90	0.005	64	180	297

CED	BW	WW	YW	SC	HP	MILK	DOC
10	0.2	76	131	0.70	14.4	35	21

CLAW	ANGLE	PAP	CW	MARB	RE	FAT	SM	SB	SC
0.41	0.51	2.06	61	0.96	1.05	0.022	80	170	300

**DUE 1-10-24**

11

## Moon Creek June J1305

COW | REG 20102809 | DOB 5/11/21 | TATTOO J1305

SydGen Enhance  
 S S Enforcer E812  
 S S Miss Daybreak K011 3K17#  
 Baldrige Command C036#  
 Baldrige June G1086  
 Baldrige June 725E

SydGen Exceed 3223#  
 SydGen Rita 2618  
 S S Daybreak K011  
 S S Miss Incentive X19  
 EF Commando 1366#  
 Baldrige Blackbird A030  
 HAYNES Outright 452#  
 Baldrige June 922C

CED	BW	WW	YW	SC	HP	MILK	DOC										
2	1.70	83	154	0.50	5.3	19	31										
		5	3				4										
CLAW	ANGLE	PAP	CW	MARB	RE	FAT	SM	SB	SC								
0.56	0.53	2.73	53	1.22	0.93	0.006	45	180	278								
			10	15			10	20									
CED	BW	WW	YW	DMI	YH	SC	DOC	HP	CEM	MILK	MW	MH	CW	MRB	RE	FAT	TEND
91	83	9	3	95	60	66	4	94	5	85	16	24	29	5	11	57	6

Exposed to Deep Creek Legitimate 203 through 5-27-23 and Moon Creek Coherent through 6-28-23.



11

MOON CREEK JUNE J1305

12

## Baldrige Blackcap G1139

COW | REG 19616141 | DOB 6/17/19 | TATTOO G1139

Basin Payweight 006S#  
 Basin Payweight 1682#  
 21AR O Lass 7017  
 CB Block Party 156#  
 Baldrige Blackcap A246  
 Baldrige Blackcap W70

Vermilion Payweight J847#  
 Basin Lucy 3829  
 HARB Pendleton 765 J H#  
 21AR O Lass F24A  
 Werner War Party 2417#  
 CB 965 Mainline  
 GAR-EGL Protege#  
 Baldrige Blackcap S964

CED	BW	WW	YW	SC	HP	MILK	DOC										
5	0.9	70	122	1.90	13.8	32	34										
		15	20	3	25	20	1										
CLAW	ANGLE	PAP	CW	MARB	RE	FAT	SM	SB	SC								
0.45	0.52	0.53	59	0.82	0.27	0.046	85	154	285								
			10	20			3	20	10								
CED	BW	WW	YW	DMI	YH	SC	DOC	HP	CEM	MILK	MW	MH	CW	MRB	RE	FAT	TEND
39	23	40	40	78	64	9	2	19	28	35	61	51	31	28	97	93	54

Due 1-26-24 to Deep Creek Legitimate 203. Exposed to Legitimate 203 through 5-24-23 and Moon Creek Coherent, Moon Creek F452 J1342 from 5-24-23 to 6-28-23. Safe AI.



12

BALDRIGE BLACKCAP G1139

13

## Moon Creek Blackbird J1329

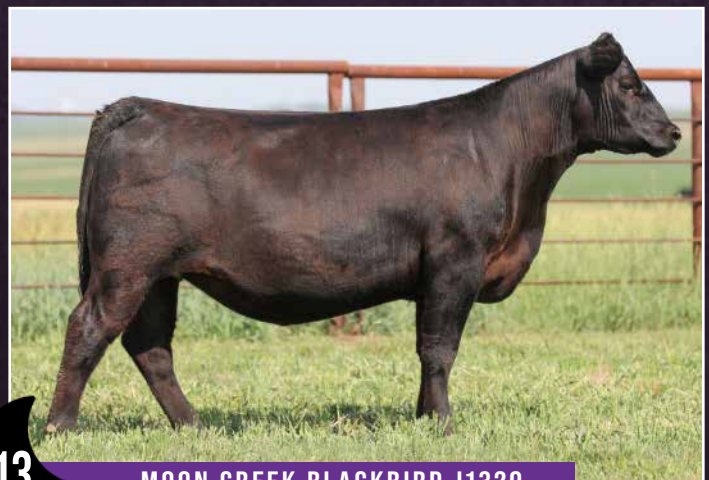
COW | REG 20102822 | DOB 6/23/21 | TATTOO J1329

V A R Legend 5019  
 Woodhill Legend B56-G103  
 Woodhill Evergreen Y121-B56  
 Basin Payweight 1682#  
 Baldrige Blackbird 639D  
 Baldrige Blackbird X722

V A R Discovery 2240#  
 PF CC87 Henrietta Pride 1044  
 Plattermere Weigh Up K360#  
 Woodhill Evergreen T136-Y121  
 Basin Payweight 006S#  
 21AR O Lass 7017  
 GAR-EGL Protege#  
 Baldrige Blackbird N10#

CED	BW	WW	YW	SC	HP	MILK	DOC										
4	2.6	80	137	1.30	12.5	31	25										
		10%	15%	25%		20%	20%										
CLAW	ANGLE	PAP	CW	MARB	RE	FAT	SM	SB	SC								
0.52	0.45	4.02	75	0.99	0.95	0.010	73	188	317								
			5%	20%	15%		25%	10%	4%								
CED	BW	WW	YW	DMI	YH	SC	DOC	HP	CEM	MILK	MW	MH	CW	MRB	RE	FAT	TEND
83	88	2	12	93	9	14	19	45	18	14	9	10	1	18	6	55	79

Exposed to Moon Creek Coherent through 6-28-23.



13

MOON CREEK BLACKBIRD J1329

14

# Moon Creek Blackbird J1302

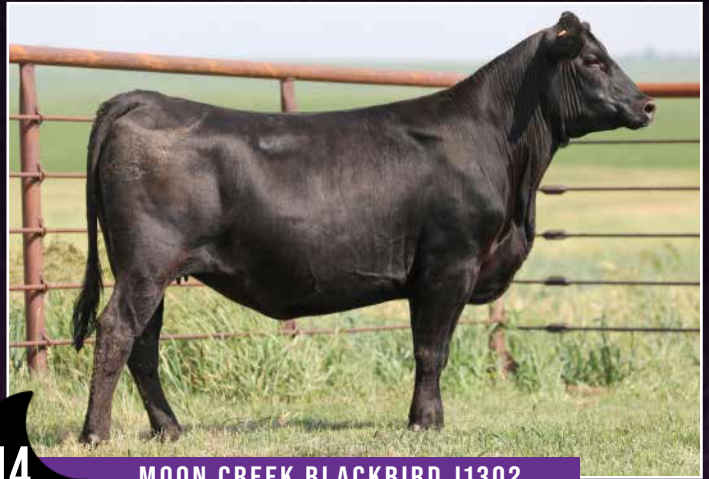
COW | REG 20102805 | DOB 5/28/21 | TATTOO J1302

G A R Ashland  
 Pine View Ashland F452  
 Pine View Ruby C064  
 Baldrige Alternative E125  
 Baldrige Blackbird G1159  
 Baldrige Blackbird G36D

G A R Early Bird  
 Chair Rock Ambush 1018  
 baldrige Xpand x743  
 44 Ruby 2225  
 Poss Easy Impact 0119  
 Baldrige Blackbird A030  
 MCC Essential 4069  
 Baldrige Blackbird 812Z

CED	BW	WW	YW	SC	HP	MILK	DOC										
9	1.5	83	149	1.20	7.1	20	27										
		30%	5%	5%	30%	15%											
CLAW	ANGLE	PAP	CW	MARB	RE	FAT	\$M	\$B	SC								
0.67	0.60	-2.10	71	0.75	0.93	0.004	36	179	268								
		2%	10%	15%		10%		30%									
CED	BW	WW	YW	DMI	YH	SC	DOC	HP	CEM	MLK	MW	MH	CW	MRB	RE	FAT	TEND
27	43	21	9	86	55	39	9	83	42	81	10	29	19	42	19	37	87

Due 1-26-24 to Deep Creek Legitimate 203. Exposed to Legitimate 203 through 5-24-23 then Moon Creek Coherent from 5-25-23 to 6-28-23.



14

MOON CREEK BLACKBIRD J1302

15

# Moon Creek Duchess J1335

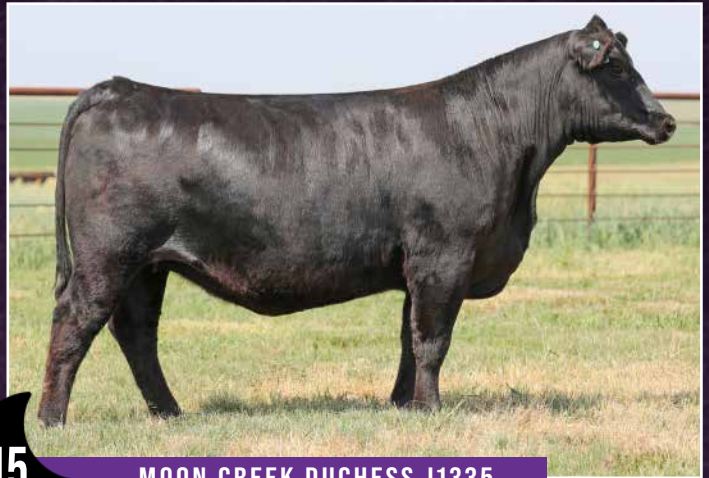
COW | REG 20119589 | DOB 5/28/21 | TATTOO J1335

G A R Ashland  
 Pine View Ashland F452  
 Pine View Ruby C064  
 Baldrige Alternative E125  
 Baldrige Duchess G1101  
 Baldrige Duchess 915C

G A R Early Bird  
 Chair Rock Ambush 1018  
 baldrige Xpand x743  
 44 Ruby 2225  
 Poss Easy Impact 0119  
 Baldrige Blackbird A030  
 Koupals BGB Extra 0011  
 Baldrige Duchess T69

CED	BW	WW	YW	SC	HP	MILK	DOC										
8	0.2	60	111	0.40	6.2	13	20										
		30%															
CLAW	ANGLE	PAP	CW	MARB	RE	FAT	\$M	\$B	SC								
0.67	0.59	-3.30	44	0.64	0.61	0.017	37	142	221								
		1%															
CED	BW	WW	YW	DMI	YH	SC	DOC	HP	CEM	MLK	MW	MH	CW	MRB	RE	FAT	TEND
40	35	66	43	66	96	78	44	91	60	98	59	89	46	60	47	52	81

Exposed to Deep Creek Legitimate 203 through 5-24-23 then Moon Creek Coherent from 5-25-23 to 6-28-23.



15

MOON CREEK DUCHESS J1335

16

# ZA Gene 9024

COW | REG 19444849 | DOB 2/21/19 | TATTOO B9024

Poss Easy Impact 0119  
 Baldrige Alternative E125  
 Baldrige Blackbird A030  
 Deer Valley All In#  
 ZA Gene B5061  
 ZA Stockman Gene B2080

Poss Total Impact 745#  
 Poss Elmaretta 736  
 Hoover Dam#  
 Baldrige Blackbird X89  
 A A R Ten X 7008 S A#  
 Deer Valley Rita 0274  
 ZA Genetics G746  
 L B 354 Stockman of 1463#

CED	BW	WW	YW	SC	HP	MILK	DOC										
2	4.1	75	136	-0.10	15.9	15	18										
		10%	10%	10%													
CLAW	ANGLE	PAP	CW	MARB	RE	FAT	\$M	\$B	SC								
0.52	0.61	-0.81	65	0.51	0.45	0.032	31	156	233								
		10%	5%			20%											
CED	BW	WW	YW	DMI	YH	SC	DOC	HP	CEM	MLK	MW	MH	CW	MRB	RE	FAT	TEND
77	87	23	10	93	44	94	32	12	49	93	2	11	23	49	90	88	88

Due 1-26-24 to Deep Creek Legitimate 203. Exposed to Legitimate 203 through 5-24-23 and Moon Creek Coherent, Moon Creek F452 J1342 from 5-24-23 to 6-28-23. Safe AI.



16

ZA GENE 9024

# 17 Moon Creek Blackbird K1455

COW | REG 20345349 | DOB 2/2/22 | TATTOO K1455

S A V Rainfall 6846  
**Baldrige Harmony H093**  
 Baldrige Isabel F036  
 Baldrige Hombre D748  
**Moon Creek Blackbird H1008**  
 Baldrige Blackbird 601D

Coleman Charlo 0256#  
 S A V Blackcap May 4136  
 Hoover No Doubt  
 Baldrige Isabel B061  
 Mill Bar Hickok 7242#  
 Baldrige Isabel Y69  
 EF Commando 1366#  
 Baldrige Blackbird X726

CED	BW	WW	YW	SC	HP	MILK	DOC	
4	0.90	69	122	0.20	11.4	33	12	
		30	30					10

CLAW	ANGLE	PAP	CW	MARB	RE	FAT	\$M	\$B	\$C
0.44	0.39	2.96	53	0.84	0.78	0.015	73	154	273
25	15			25	30				

CED	BW	WW	YW	DMI	YH	SC	DOC	HP	CEM	MLK	MW	MH	CW	MRB	RE	FAT	TEND
85	62	15	17	96	8	70	66	47	35	9	46	19	14	35	17	51	41

AI to Deep Creek Legitimate 203 on 6-1-23 then exposed to Moon Creek Coherent through 6-30-23

# 18 Moon Creek Primrose K1402

COW | REG 20347261 | DOB 2/1/22 | TATTOO K1402

Woodhill Blueprint  
**Myers Fair-N-Square M39**  
 Myers Miss Beauty M136  
 V A R Discovery 2240#  
**Baldrige Primrose Lady 711E**  
 Baldrige Primrose Lady U241

Connealy Confidence Plus#  
 Woodhill Evergreen Z291-B233  
 Connealy Thunder#  
 Myers Miss Beauty M476T  
 A A R Ten X 7008 S A#  
 Deer Valley Rita 0308  
 Jauer 353 Traveler 589 27#  
 GDAR Primrose Lady 515

CED	BW	WW	YW	SC	HP	MILK	DOC	
2	3.60	88	161	0.70	5.4	23	24	
		3	2					25

CLAW	ANGLE	PAP	CW	MARB	RE	FAT	\$M	\$B	\$C
0.48	0.45	4.15	68	0.94	0.66	-0.012	36	174	262
		15	25			20			

CED	BW	WW	YW	DMI	YH	SC	DOC	HP	CEM	MLK	MW	MH	CW	MRB	RE	FAT	TEND
67	81	6	5	99	84	40	28	97	7	87	4	20	17	7	69	71	86

AI to Deep Creek Legitimate 203 on 6-1-23 then exposed to Moon Creek Coherent through 6-30-23

# 19 Moon Creek Isabel K1426

COW | REG 20347374 | DOB 2/16/22 | TATTOO K1426

Tehama Upward Y238  
**Tehama Tahoe B767#**  
 Tehama Mary Blackbird Y684  
 Baldrige Waylon W34#  
**Baldrige Isabel 902C**  
 Baldrige Isabel X139

Sitz Upward 307R#  
 Tehama Elite Blackbird T735  
 S A V Final Answer 0035#  
 Tehama Mary Blackbird T073  
 GAR-EGL Protege#  
 Baldrige Blackcap T163  
 S A V Final Answer 0035#  
 River Hills Isabel U296

CED	BW	WW	YW	SC	HP	MILK	DOC	
5	2.0	80	135	0.10	9.1	27	16	
		10%	15%					

CLAW	ANGLE	PAP	CW	MARB	RE	FAT	\$M	\$B	\$C
0.56	0.49	2.47	55	0.80	1.00	-0.015	71	158	276
		10%	20%	30%			25%		

CED	BW	WW	YW	DMI	YH	SC	DOC	HP	CEM	MLK	MW	MH	CW	MRB	RE	FAT	TEND
73	79	10	21	67	46	87	56	66	28	31	54	53	23	28	8	22	85

AI to Deep Creek Legitimate 203 on 6-1-23 then exposed to Moon Creek Coherent through 6-30-23

# 20 Moon Creek Blackbird K1445

COW | REG 20345345 | DOB 3/3/22 | TATTOO K1445

V A R Legend 5019  
**Woodhill Legend B56-G103**  
 Woodhill Evergreen Y121-B56  
 Baldrige Colonel C251#  
**Baldrige Blackbird 857F**  
 Baldrige Blackbird 629D

V A R Discovery 2240#  
 PF CCG7 Henrietta Pride 1044  
 Plattemere Weigh Up K360#  
 Woodhill Evergreen T136-Y121  
 baldrige Xpand x743  
 Baldrige Isabel Y69  
 LD Emblazon 999#  
 Baldrige Blackbird 850A

CED	BW	WW	YW	SC	HP	MILK	DOC
8	-0.5	63	124	0.90	11.0	33	26
		15%	30%			10%	20%

CLAW	ANGLE	PAP	CW	MARB	RE	FAT	\$M	\$B	\$C
0.42	0.44	2.68	51	0.76	0.31	0.016	68	141	251
		20%							

CED	BW	WW	YW	DMI	YH	SC	DOC	HP	CEM	MLK	MW	MH	CW	MRB	RE	FAT	TEND
58	27	12	8	99	28	34	36	74	29	13	25	44	6	29	72	74	70

AI to Deep Creek Legitimate 203 on 6-1-23 then exposed to Moon Creek Coherent through 6-30-23

# 21 Moon Creek Blackbird K1420

COW | REG 20345334 | DOB 2/11/22 | TATTOO K1420

S A V Rainfall 6846  
**Baldrige Harmony H093**  
 Baldrige Isabel F036  
 Baldrige Colonel C251#  
**Baldrige Blackbird 831F**  
 Baldrige Blackbird 853A

Coleman Charlo 0256#  
 S A V Blackcap May 4136  
 Hoover No Doubt  
 Baldrige Isabel B061  
 baldrige Xpand x743  
 Baldrige Isabel Y69  
 Baldrige Waylon W34#  
 Baldrige Blackbird 931

CED	BW	WW	YW	SC	HP	MILK	DOC
3	0.5	73	133	0.30	9.7	24	18
		20%	15%				

CLAW	ANGLE	PAP	CW	MARB	RE	FAT	\$M	\$B	\$C
0.41	0.35	2.99	43	0.52	0.73	0.010	79	122	237
		20%	4%						

CED	BW	WW	YW	DMI	YH	SC	DOC	HP	CEM	MLK	MW	MH	CW	MRB	RE	FAT	TEND
83	47	16	15	97	54	84	67	71	74	51	68	79	36	74	20	48	27

AI to Deep Creek Legitimate 203 on 6-1-23 then exposed to Moon Creek Coherent through 6-30-23

# 22 Moon Creek Isabel K1464

COW | REG 20347956 | DOB 2/5/22 | TATTOO K1464

S A V Rainfall 6846  
**Baldrige Harmony H093**  
 Baldrige Isabel F036  
 Mill Brae Identified 4031#  
**ZA Isabel H048**  
 Baldrige Isabel C273

Coleman Charlo 0256#  
 S A V Blackcap May 4136  
 Hoover No Doubt  
 Baldrige Isabel B061  
 Koupals BGG Identity#  
 Mill Brae Pro Blackcap 1092  
 LD Emblazon 999#  
 Baldrige Isabel T935

CED	BW	WW	YW	SC	HP	MILK	DOC
5	0.6	85	148	1.00	12.0	27	7
		4%	5%				

CLAW	ANGLE	PAP	CW	MARB	RE	FAT	\$M	\$B	\$C
0.47	0.39	1.33	48	0.71	0.88	0.019	77	129	244
		15%			20%				

CED	BW	WW	YW	DMI	YH	SC	DOC	HP	CEM	MLK	MW	MH	CW	MRB	RE	FAT	TEND
81	55	11	17	92	88	37	91	51	41	40	72	85	67	41	25	60	23

AI to Deep Creek Legitimate 203 on 6-1-23 then exposed to Moon Creek Coherent through 6-30-23

Sale  
 Contacts



**KOREY KRULL**  
 712-330-5459  
 MOONCREEKANGUSFARM.COM



**SALE STAFF**  
 CHRIS EARL 630-675-6559  
 WES TIEMANN 816-244-4462  
 KODY FLEEMAN 5753-881-0117

## 23 Moon Creek Rita K1459

COW | REG 20345352 | DOB 2/26/22 | TATTOO K1459

S A V Rainfall 6846  
**Baldrige Harmony H093**  
 Baldrige Isabel F036  
 Baldrige Hombre D748  
**Moon Creek Rita H1033**  
 Baldrige Rita 913C

Coleman Charlo 0256#  
 S A V Blackcap May 4136  
 Hoover No Doubt  
 Baldrige Isabel B061  
 Mill Bar Hickok 7242#  
 Baldrige Isabel Y69  
 Baldrige Waylon W34#  
 Baldrige Rita P60#

CED	BW	WW	YW	SC	HP	MILK	DOC
4	1.4	74	133	1.10	11.1	20	24
		20%	15%			25%	

CLAW	ANGLE	PAP	CW	MARB	RE	FAT	\$M	\$B	SC
0.49	0.32	0.46	46	0.46	0.80	0.020	79	128	245
		2%	30%			15%			

CED	BW	WW	YW	DMI	YH	SC	DOC	HP	CEM	MLK	MW	MH	CW	MRB	RE	FAT	TEND
36	27	13	14	94	50	51	21	54	70	85	57	51	36	70	20	70	26

AI to Deep Creek Legitimate 203 on 6-1-23 then exposed to Moon Creek Coherent through 6-30-23

## 24 Moon Creek Isabel K1425

COW | REG 20347171 | DOB 1/28/22 | TATTOO K1425

G A R Progress#  
**Basin Advance 3134#**  
 Basin O Lass 1663  
 LD Capitalist 316#  
**Moon Creek Isabel H1049**  
 Baldrige Isabel 810F

G A R Predestined#  
 G A R Objective 2345  
 Basin Payweight 006S#  
 21AR O Lass 7017  
 Connealy Capitalist 028#  
 LD Dixie Erica 2053  
 Baldrige 8 Ball  
 Baldrige Isabel 904C

CED	BW	WW	YW	SC	HP	MILK	DOC
9	1.9	66	103	-0.20	2.3	28	11
		30%					

CLAW	ANGLE	PAP	CW	MARB	RE	FAT	\$M	\$B	SC
0.35	0.42	2.21	45	0.77	0.60	0.035	59	146	248
		5%	20%						

CED	BW	WW	YW	DMI	YH	SC	DOC	HP	CEM	MLK	MW	MH	CW	MRB	RE	FAT	TEND
58	76	22	81	13	79	95	84	99	36	14	55	66	38	36	40	93	58

AI to Deep Creek Legitimate 203 on 6-1-23 then exposed to Moon Creek Coherent through 6-30-23

## 25 Moon Creek F452 K1452

COW | REG 20345348 | DOB 3/1/22 | TATTOO K1452

G A R Ashland  
**Pine View Ashland F452**  
 Pine View Ruby C064  
 Baldrige 38 Special#  
**Baldrige Prophet 816F**  
 Baldrige Prophet 607D

G A R Early Bird  
 Chair Rock Ambush 1018  
 baldrige Xpand x743  
 44 Ruby 2225  
 EF Commando 1366#  
 Baldrige Isabel Y69  
 Fortunes Conquest 224  
 H P C A Prophet A004

CED	BW	WW	YW	SC	HP	MILK	DOC
5	1.6	68	130	0.60	8.8	25	13
		20%					

CLAW	ANGLE	PAP	CW	MARB	RE	FAT	\$M	\$B	SC
0.40	0.43	0.51	45	0.57	0.77	0.026	55	132	226
		15%	25%						

CED	BW	WW	YW	DMI	YH	SC	DOC	HP	CEM	MLK	MW	MH	CW	MRB	RE	FAT	TEND
62	63	19	8	88	14	52	77	68	73	24	17	17	27	73	21	62	44

AI to Deep Creek Legitimate 203 on 6-1-23 then exposed to Moon Creek Coherent through 6-30-23

## 26 Moon Creek June K1453

COW | REG 20347377 | DOB 2/8/22 | TATTOO K1453

Tehama Upward Y238  
**Tehama Tahoe B767#**  
 Tehama Mary Blackbird Y684  
 Fortunes Conquest 224  
**Baldrige June 922C**  
 Baldrige June 809Z

Sitz Upward 307R#  
 Tehama Elite Blackbird T735  
 S A V Final Answer 0035#  
 Tehama Mary Blackbird T073  
 Connealy Confidence 0100#  
 Fortunes 4412 Ethelda 742  
 TC Touchdown 772  
 Baldrige June X401

CED	BW	WW	YW	SC	HP	MILK	DOC
9	1.0	73	115	1.20	10.8	25	8
		20%	30%				

CLAW	ANGLE	PAP	CW	MARB	RE	FAT	\$M	\$B	SC
0.36	0.39	0.35	43	0.45	0.72	0.004	79	114	227
		10%	15%		30%		15%		

CED	BW	WW	YW	DMI	YH	SC	DOC	HP	CEM	MLK	MW	MH	CW	MRB	RE	FAT	TEND
39	70	12	59	73	30	25	92	56	61	40	55	71	33	61	31	46	29

AI to Deep Creek Legitimate 203 on 6-1-23 then exposed to Moon Creek Coherent through 6-30-23



Annual Production Sale

AUGUST 4, 2023 - 6 PM

WATCH AND BID LIVE ON DV AUCTION!  
 Cattle will sell on video screen at the sale site.



27

# Baldrige Clover 845F

COW | REG 19509517 | DOB 4/12/18 | TATTOO 845F

CCC Merritt 030  
 Crouthamel Protocol 3022  
 CCC Lady Rain 932#  
 SydGen C C & 7#  
 Byergo Clover 150  
 Byergo Clover 850

Connealy Packer 547#  
 MVCC GAR Bando 1240  
 Rocking R Rimrock 701  
 Camas Prairie K Lady 7507  
 S A F Connection#  
 SydGen Forever Lady 4087  
 LCC New Standard#  
 Byergo Clover 513

CED	BW	WW	YW	SC	HP	MILK	DOC										
-4	4.6	81	147	1.10	17.2	42	31										
		4%	3%	30%	4%	1%	2%										
CLAW	ANGLE	PAP	CW	MARB	RE	FAT	\$M	\$B	\$C								
0.51	0.44	3.82	84	0.57	0.81	-0.003	57	190	303								
		25%	1%	15%	30%		2%		3%								
CED	BW	WW	YW	DMI	YH	SC	DOC	HP	CEM	MLK	MW	MH	CW	MRB	RE	FAT	TEND
98	97	7	3	88	1	25	4	6	38	1	3	1	1	38	15	31	40

Due 1-18-24 to WSC Harley.



BYERGO CLOVER Dam of Lot 27

28

# Baldrige Blackbird 831F

COW | REG 19506995 | DOB 5/27/18 | TATTOO 831F

baldrige Xpand x743  
 Baldrige Colonel C251#  
 Baldrige Isabel Y69  
 Baldrige Waylon W34#  
 Baldrige Blackbird 853A  
 Baldrige Blackbird 931

Hoover Dam#  
 Baldrige Queen S87  
 Styles Upgrade J59#  
 Baldrige Isabel T935  
 GAR-EGL Protege#  
 Baldrige Blackcap T163  
 CAR Efficient 534#  
 Baldrige Blackbird N10#

CED	BW	WW	YW	SC	HP	MILK	DOC										
4	1.6	66	125	0.70	6.2	23	27										
		25%	15%				10%										
CLAW	ANGLE	PAP	CW	MARB	RE	FAT	\$M	\$B	\$C								
0.55	0.45	3.23	46	0.35	0.64	-0.003	45	123	205								
		30%		35%	30%												
CED	BW	WW	YW	DMI	YH	SC	DOC	HP	CEM	MLK	MW	MH	CW	MRB	RE	FAT	TEND
53	39	54	26	90	43	54	17	88	78	67	38	44	52	78	62	53	48

Due 1-20-24 to WSC Harley.

29

# Baldrige Blackbird G1150

COW | REG 19598732 | DOB 7/1/19 | TATTOO G1150

Mill Bar Hickok 7242#  
 Baldrige Hombre D748  
 Baldrige Isabel Y69  
 Baldrige Waylon W34#  
 Baldrige Blackbird 853A  
 Baldrige Blackbird 931

Connealy Consensus 7229#  
 Mill Bar Bemindful Maid 6304  
 Styles Upgrade J59#  
 Baldrige Isabel T935  
 GAR-EGL Protege#  
 Baldrige Blackcap T163  
 CAR Efficient 534#  
 Baldrige Blackbird N10#

CED	BW	WW	YW	SC	HP	MILK	DOC										
7	1.9	71	134	0.30	10.3	26	20										
		25%	15%														
CLAW	ANGLE	PAP	CW	MARB	RE	FAT	\$M	\$B	\$C								
0.63	0.52	2.86	51	0.52	0.45	0.043	54	134	228								
CED	BW	WW	YW	DMI	YH	SC	DOC	HP	CEM	MLK	MW	MH	CW	MRB	RE	FAT	TEND
67	79	50	15	87	83	72	48	64	59	80	49	72	68	59	88	89	54

Due 2-24-24 to Schiefelbein Top Gun 522.

30

# Baldrige Isabel 855F

COW | REG 19507002 | DOB 7/20/18 | TATTOO 855F

Mill Bar Hickok 7242#  
 Baldrige Hombre D748  
 Baldrige Isabel Y69  
 LD Emblazon 999#  
 Baldrige Isabel 640D  
 Baldrige Isabel X158

Connealy Consensus 7229#  
 Mill Bar Bemindful Maid 6304  
 Styles Upgrade J59#  
 Baldrige Isabel T935  
 O C C Emblazon 854E#  
 SH Forever Lady 3124 5118T  
 S A V Final Answer 0035#  
 River Hills Isabel U289

CED	BW	WW	YW	SC	HP	MILK	DOC										
6	1.0	59	109	0.30	12.1	25	17										
CLAW	ANGLE	PAP	CW	MARB	RE	FAT	\$M	\$B	\$C								
0.43	0.39	1.54	21	0.47	0.56	-0.022	55	99	183								
CED	BW	WW	YW	DMI	YH	SC	DOC	HP	CEM	MLK	MW	MH	CW	MRB	RE	FAT	TEND
48	43	82	57	39	95	77	62	39	65	82	46	78	96	65	57	18	34

Due 1-28-24 to Schiefelbein Top Gun 522.

31

# Baldrige Pride 743E

COW | REG 19396669 | DOB 5/17/17 | TATTOO 743E

Basin Payweight 006S#  
 Basin Payweight 1682#  
 21AR O Lass 7017  
 S A V Bismarck 5682#  
 Baldrige Pride X709  
 Baldrige Pride S665

Vermilion Payweight J847#  
 Basin Lucy 3829  
 HARB Pendleton 765 J H#  
 21AR O Lass F24A  
 G A R Grid Maker#  
 S A V Abigale 0451  
 Rito 112 of 2536 Rito 616#  
 River Hills Pride 394N

CED	BW	WW	YW	SC	HP	MILK	DOC										
9	0.8	67	109	0.70	10.5	22	28										
CLAW	ANGLE	PAP	CW	MARB	RE	FAT	\$M	\$B	\$C								
0.59	0.53	2.53	52	0.42	0.36	0.039	67	142	251								
CED	BW	WW	YW	DMI	YH	SC	DOC	HP	CEM	MLK	MW	MH	CW	MRB	RE	FAT	TEND
10	10	45	87	3	96	49	10	58	83	78	63	75	40	83	85	79	28

Safe to Deep Creek Legitimate, Moon Creek Coherent, or Moon Creek F452 J1342.

Watch and Bid Live!

**DVAuction**  
 Broadcasting Real-Time Auctions

The sale will be broadcast live on DVAuction.com. Please register to bid at least 24 hours in advance of the sale. Videos will be available approximately two weeks prior to sale day.



32

# Baldrige Blackcap G1135

COW | REG 19607821 | DOB 6/12/19 | TATTOO G1135

Basin Payweight 006S#  
**Basin Payweight 1682#**  
 21AR O Lass 7017  
 CB Block Party 156#  
**Baldrige Blackcap A246**  
 Baldrige Blackcap W70

Vermilion Payweight J847#  
 Basin Lucy 3829  
 HARB Pendleton 765 J H#  
 21AR O Lass F24A  
 Werner War Party 2417#  
 CB 965 Mainline  
 GAR-EGL Protege#  
 Baldrige Blackcap S964

CED	BW	WW	YW	SC	HP	MILK	DOC										
4	0.9	67	120	1.20	9.7	31	16										
		20%	20%	25%	20%												
CLAW	ANGLE	PAP	CW	MARB	RE	FAT	\$M	\$B	\$C								
0.54	0.49	1.05	65	0.49	0.48	0.065	47	146	236								
		5%				25%											
CED	BW	WW	YW	DMI	YH	SC	DOC	HP	CEM	MLK	MW	MH	CW	MRB	RE	FAT	TEND
50	28	32	30	89	48	39	57	67	60	33	16	33	10	60	70	97	62

Due 1-24-24 to Deep Creek Legitimate.

33

# Baldrige Mademoiselle G1003

COW | REG 19596280 | DOB 1/13/19 | TATTOO G1003

Connealy Capitalist 028#  
**LD Capitalist 316#**  
 LD Dixie Erica 2053  
 EF Commando 1366#  
**Baldrige Mademoiselle 610D**  
 Baldrige Mademoiselle 825B

S A V Final Answer 0035#  
 Prides Pita of Conanga 8821  
 C A Future Direction 5321#  
 LD Dixie Erica Oar 0853  
 EF Complement 8088#  
 Riverbend Young Lucy W1470  
 Baldrige Xpand X227  
 SydGen Mademoiselle 1447

CED	BW	WW	YW	SC	HP	MILK	DOC										
10	1.2	75	130	-0.30	6.1	36	6										
		20%	10%	10%	5%												
CLAW	ANGLE	PAP	CW	MARB	RE	FAT	\$M	\$B	\$C								
0.51	0.52	3.00	68	0.95	0.73	0.067	52	171	274								
		4%		15%		20%		10%									
CED	BW	WW	YW	DMI	YH	SC	DOC	HP	CEM	MLK	MW	MH	CW	MRB	RE	FAT	TEND
12	41	13	16	95	39	98	94	90	26	4	22	25	5	26	20	98	29

Due 1-28-24 to Schiefelbein Top Gun 522.

34

# Baldrige Primrose Lady 711E

COW | REG 19471775 | DOB 1/12/17 | TATTOO 711E

A A R Ten X 7008 S A#  
**V A R Discovery 2240#**  
 Deer Valley Rita 0308  
 Jauer 353 Traveler 589 27#  
**Baldrige Primrose Lady U241**  
 GDAR Primrose Lady 515

Mytty In Focus#  
 A A R Lady Kelton 5551T  
 Sitz Upward 307R#  
 G A R Objective 2345  
 Jauer 7111 Traveler 353 719  
 Jauer 6807 Traveler 27 085  
 ER Justice N013#  
 GDAR Primrose Lady 3406

CED	BW	WW	YW	SC	HP	MILK	DOC										
1	2.5	71	137	0.50	9.3	22	16										
		15%	10%														
CLAW	ANGLE	PAP	CW	MARB	RE	FAT	\$M	\$B	\$C								
0.51	0.48	6.05	57	0.92	0.41	0.002	38	167	255								
		15%		15%		35%		10%									
CED	BW	WW	YW	DMI	YH	SC	DOC	HP	CEM	MLK	MW	MH	CW	MRB	RE	FAT	TEND
95	96	14	3	96	42	74	39	79	19	85	6	17	20	19	88	69	60

Due 1-21-24 to Deep Creek Legitimate.

35

# Baldrige Primrose Lady 755E

COW | REG 19472853 | DOB 7/2/17 | TATTOO 755E

A A R Ten X 7008 S A#  
**V A R Discovery 2240#**  
 Deer Valley Rita 0308  
 Jauer 353 Traveler 589 27#  
**Baldrige Primrose Lady U241**  
 GDAR Primrose Lady 515

Mytty In Focus#  
 A A R Lady Kelton 5551T  
 Sitz Upward 307R#  
 G A R Objective 2345  
 Jauer 7111 Traveler 353 719  
 Jauer 6807 Traveler 27 085  
 ER Justice N013#  
 GDAR Primrose Lady 3406

CED	BW	WW	YW	SC	HP	MILK	DOC										
-2	2.9	72	140	1.30	7.4	22	10										
		15%	4%	20%													
CLAW	ANGLE	PAP	CW	MARB	RE	FAT	\$M	\$B	\$C								
0.59	0.57	5.04	66	0.56	0.71	-0.042	14	173	238								
		5%		25%		2%		10%									
CED	BW	WW	YW	DMI	YH	SC	DOC	HP	CEM	MLK	MW	MH	CW	MRB	RE	FAT	TEND
96	92	25	3	89	42	37	75	92	57	86	3	7	11	57	40	7	86

Safe to Deep Creek Legitimate, Moon Creek Coherent, or Moon Creek F452 J1342.



## 36 Baldridge Mademoiselle 637D

<b>36</b>	<b>COW</b>	<b>REG</b> 18760465	<b>DOB</b> 5/20/16	<b>TATTOO</b> 637D													
D R Sierra Cut 7404#		G A R Retail Product#															
Connealy Western Cut#		D R Dobra 3453#															
Eura Elga of Conanga 9109#		S A V Bismarck 5682#															
SydGen 928 Destination 5420#		Eura Cal of Conanga 56B															
SydGen Mademoiselle 1447		B/R Destination 727-928#															
SydGen Mademoiselle 7707#		Shady Brook Entense 76D 29H															
		G A R Grid Maker#															
		SydGen Mademoiselle 1490#															
<b>CED</b>	<b>BW</b>	<b>WW</b>	<b>YW</b>	<b>SC</b>	<b>HP</b>	<b>MILK</b>	<b>DOC</b>										
4	0.5	63	119	.54	15.2	27	24										
	30%	30%	20%		15%		15%										
<b>CLAW</b>	<b>ANGLE</b>	<b>PAP</b>	<b>CW</b>	<b>MARB</b>	<b>RE</b>	<b>FAT</b>	<b>\$M</b>	<b>\$B</b>	<b>SC</b>								
0.42	0.44	4.07	45	0.16	0.61	-.001	63	121	220								
15%	25%				30%												
<b>CED</b>	<b>BW</b>	<b>WW</b>	<b>YW</b>	<b>DMI</b>	<b>YH</b>	<b>SC</b>	<b>DOC</b>	<b>HP</b>	<b>CEM</b>	<b>MLK</b>	<b>MW</b>	<b>MH</b>	<b>CW</b>	<b>MRB</b>	<b>RE</b>	<b>FAT</b>	<b>TEND</b>
56	23	44	18	77	49	59	28	15	82	31	16	23	36	96	42	40	76

Due 1-21-24 to WSC Harley

## 37 Baldridge Lady 834F

<b>37</b>	<b>COW</b>	<b>REG</b> 19512157	<b>DOB</b> 5/26/18	<b>TATTOO</b> 834F													
EF Commando 1366#		EF Complement 8088#															
Baldridge Command C036#		Riverbend Young Lucy W1470															
Baldridge Blackbird A030		Hoover Dam#															
MCC Essential 4069		Baldridge Blackbird X89															
Baldridge Lady 627D		Connealy Earnan 076E#															
Baldridge Lady 804Z		MCC SuperMama 0139#															
		TC Touchdown 772															
		Baldridge Lady S519															
<b>CED</b>	<b>BW</b>	<b>WW</b>	<b>YW</b>	<b>SC</b>	<b>HP</b>	<b>MILK</b>	<b>DOC</b>										
9	1.8	73	138	1.36	6.9	33	15										
25%		10%	5%	15%		15%											
<b>CLAW</b>	<b>ANGLE</b>	<b>PAP</b>	<b>CW</b>	<b>MARB</b>	<b>RE</b>	<b>FAT</b>	<b>\$M</b>	<b>\$B</b>	<b>SC</b>								
0.48	0.37	0.77	65	0.50	0.70	-0.011	48	156	250								
	4%		5%	25%		20%			25%								
<b>CED</b>	<b>BW</b>	<b>WW</b>	<b>YW</b>	<b>DMI</b>	<b>YH</b>	<b>SC</b>	<b>DOC</b>	<b>HP</b>	<b>CEM</b>	<b>MLK</b>	<b>MW</b>	<b>MH</b>	<b>CW</b>	<b>MRB</b>	<b>RE</b>	<b>FAT</b>	<b>TEND</b>
26	51	27	4	99	52	8	64	92	70	12	14	19	15	68	46	55	97

Due 1-21-24 to Deep Creek Legitimate 203

## 38 Baldridge Missy 603D

<b>38</b>	<b>COW</b>	<b>REG</b> 18727367	<b>DOB</b> 1/10/16	<b>TATTOO</b> 603D													
Connealy Confidence 0100#		Connealy Tobin															
Fortunes Conquest 224		Becka Gala of Conanga 8281															
Fortunes 4412 Ethelda 742		S A V 004 Traveler 4412															
Sitz Upward 307R#		Fortunes 112 Ethelda 423															
Baldridge Missy 0164		Connealy Onward#															
PCAR Missy 4009#		Sitz Henrietta Pride 81M															
		Woodhill Foresight#															
		PCAR Missy 2297															
<b>CED</b>	<b>BW</b>	<b>WW</b>	<b>YW</b>	<b>SC</b>	<b>HP</b>	<b>MILK</b>	<b>DOC</b>										
10	0.9	49	93	.11	15.1	26	7										
20%					20%												
<b>CLAW</b>	<b>ANGLE</b>	<b>PAP</b>	<b>CW</b>	<b>MARB</b>	<b>RE</b>	<b>FAT</b>	<b>\$M</b>	<b>\$B</b>	<b>SC</b>								
0.56	0.36	2.25	40	0.33	0.35	.036	68	120	224								
	5%																
<b>CED</b>	<b>BW</b>	<b>WW</b>	<b>YW</b>	<b>DMI</b>	<b>YH</b>	<b>SC</b>	<b>DOC</b>	<b>HP</b>	<b>CEM</b>	<b>MLK</b>	<b>MW</b>	<b>MH</b>	<b>CW</b>	<b>MRB</b>	<b>RE</b>	<b>FAT</b>	<b>TEND</b>
35	62	63	41	70	67	71	95	23	70	65	56	47	41	68	76	79	56

Due 1-28-24 to Schiefelbein Top Gun



BALDRIDGE COMMAND C036 Sire of Lot 37

DEDICATED TO THE  
*best Angus genetics*

## 39 Baldridge Pride 730E

**COW | REG 19376982 | DOB 6/2/17 | TATTOO 730E**

<p>EF Commando 1366#  <b>Baldridge 8 Ball</b>           Baldridge Isabel Y69          Baldridge Kaboom K243 KCF#  <b>River Hills Pride T896</b>          Destinys Pride D044</p>	<p>EF Complement 8088#          Riverbend Young Lucy W1470          Styles Upgrade J59#          Baldridge Isabel T935          Jauer 353 Traveler 589 27#          Pleasanta of Conanga 736          Leachman Right Time#          Hyline Pride 265</p>
--	--

CED	BW	WW	YW	SC	HP	MILK	DOC
10	0.2	63	108	.21	7.0	27	18
20%	25%	30%		25%			

CLAW	ANGLE	PAP	CW	MARB	RE	FAT	\$M	\$B	\$C
0.35	0.29	2.46	36	0.72	0.56	.018	70	126	233
3%	1%		30%				25%		

CED	BW	WW	YW	DMI	YH	SC	DOC	HP	CEM	MLK	MW	MH	CW	MRB	RE	FAT	TEND
24	31	57	65	68	61	18	63	88	52	51	66	64	61	39	54	62	100

**Due 1-21-24 to Deep Creek Legitimate 203**

## 40 Baldridge Lady 606D

**COW | REG 18727370 | DOB 1/13/16 | TATTOO 606D**

<p>EF Complement 8088#  <b>EF Commando 1366#</b>           Riverbend Young Lucy W1470          Baldridge Jennings Z064  <b>Baldridge Lady 824B</b>          Baldridge Lady 804Z</p>	<p>Basin Franchise P142#          EF Everelda Entense 6117          B/R Ambush 28#          Riverbend Young Lucy T1080          Baldridge Waylon W34#          Baldridge Maverick T43          TC Touchdown 772          Baldridge Lady S519</p>
---	--

CED	BW	WW	YW	SC	HP	MILK	DOC
6	1.7	70	119	.21	9.9	21	11
		15%	20%				

CLAW	ANGLE	PAP	CW	MARB	RE	FAT	\$M	\$B	\$C
0.48	0.38	3.39	29	0.69	0.35	.045	77	108	217
	5%		30%				10%		

CED	BW	WW	YW	DMI	YH	SC	DOC	HP	CEM	MLK	MW	MH	CW	MRB	RE	FAT	TEND
60	52	54	64	77	84	72	81	65	74	91	94	91	96	27	97	97	9

**Due end of Feb to Deep Creek Legitimate 203, Moon Creek Coherent or Moon Creek F452 J1342**



**BRINGING QUALITY AND SERVICE**  
*to the cattle industry.*



41

# Ball of Fire x G1170

*Embryos*

GB Fireball 672  
RSA Ball of Fire  
RSA Forever Lady 853

Spring Cove Reno 4021#  
Baldrige Isabel G1170  
Baldrige Isabel D753

G A R Sure Fire 6404  
GB Anticipation 432  
S A V Resource 1441#  
B I G Prophet of 005 4031

KM Broken Bow 002#  
Spring Cove Liza 021  
Mill Bar Hickok 7242#  
Baldrige Isabel Y69

SIRE

GED	BW	WW	YW	SC	HP	MILK	DOC		
13	.9	76	139	1.60	13.8	26	21		
CLAW	ANGLE	PAP	CW	MARB	RE	FAT	\$M	\$B	\$C
0.43	.40	-.06	53	1.65	1.26	0.004	72	205	338

DAM

GED	BW	WW	YW	SC	HP	MILK	DOC		
5	0.5	73	130	.91	18.8	23	28		
CLAW	ANGLE	PAP	CW	MARB	RE	FAT	\$M	\$B	\$C
0.41	0.58	1.95	46	1.21	0.60	0.001	72	165	286

*Three Embryos Guarantee One Pregnancy*



RSA Ball of Fire Sire of Lot 41

42

# Don Julio x G1172

*Embryos*

Poss Deadwood  
RRR Don Julio R2161  
RRR Isabel R2838

Spring Cove Reno 4021#  
Baldrige Isabel G1172  
Baldrige Isabel D753

Poss Maverick  
Poss Ellunamere 399  
Spring Cove Reno 4021  
Baldrige Isabel C773

KM Broken Bow 002#  
Spring Cove Liza 021  
Mill Bar Hickok 7242#  
Baldrige Isabel Y69

SIRE

GED	BW	WW	YW	SC	HP	MILK	DOC		
10	0.4	78	147	1.30	14.4	34	25		
CLAW	ANGLE	PAP	CW	MARB	RE	FAT	\$M	\$B	\$C
0.47	0.38	3.15	86	1.51	1.18	-0.015	68	250	392

DAM

GED	BW	WW	YW	SC	HP	MILK	DOC		
4	2.1	81	140	1.18	17.5	27	21		
CLAW	ANGLE	PAP	CW	MARB	RE	FAT	\$M	\$B	\$C
0.42	0.51	4.57	49	0.92	0.38	0.012	67	147	258

*Three Embryos Guarantee One Pregnancy*



Baldrige Isabel G1170 Donor Dam of Lot 41



Baldrige Isabel G1172 Donor Dam of Lot 42

notes

---

---

---

---

---

---

---

---

---

---

---

---

---

---

---

---

---

---

---

---

---

---

---

# 43 Heat Seeker x H1052 *Embryos*

Mill Brae Identified 4031#  
**Baldrige Heat Seeker H925**  
 Baldrige Isabel E048  
 Baldrige Hombre D748  
**Moon Creek Erica of RR H1052**  
 Moon Creek Erica of RR 813F

Koupals B&B Identity#  
 Mill Brae Pro Blackcap 1092  
 Connealy Confidence Plus#  
 Baldrige Isabel Y69  
 Mill Bar Hickok 7242#  
 Baldrige Isabel Y69  
 Baldrige 38 Special#  
 Erica of Ellston R65

SIRE	SIRE									
	CED	BW	WW	YW	SC	HP	MILK	DOC		
	8	0.0	72	129	1.31	17.2	30	25		
DAM	DAM									
	CLAW	ANGLE	PAP	CW	MARB	RE	FAT	\$M	\$B	\$C
	0.38	0.44	1.91	62	1.54	1.13	0.021	101	222	389
DAM	DAM									
	CED	BW	WW	YW	SC	HP	MILK	DOC		
	6	1.2	90	164	0.87	13.4	33	29		
DAM	DAM									
	CLAW	ANGLE	PAP	CW	MARB	RE	FAT	\$M	\$B	\$C
	0.46	0.48	0.17	78	0.75	0.84	0.012	64	165	278

**Three Embryos Guarantee One Pregnancy**

# 44 Heat Seeker x X85 *Embryos*

Mill Brae Identified 4031#  
**Baldrige Heat Seeker H925**  
 Baldrige Isabel E048  
 Hoover No Doubt  
**Erica of Ellston X85**  
 Erica of Ellston S7#

Koupals B&B Identity#  
 Mill Brae Pro Blackcap 1092  
 Connealy Confidence Plus#  
 Baldrige Isabel Y69  
 Mogck Bullseye#  
 Miss Blackcap Ellston J2  
 Baldrige 38 Special#  
 Erica of Ellston L5

SIRE	SIRE									
	CED	BW	WW	YW	SC	HP	MILK	DOC		
	8	0.0	72	129	1.31	17.2	30	25		
DAM	DAM									
	CLAW	ANGLE	PAP	CW	MARB	RE	FAT	\$M	\$B	\$C
	0.38	0.44	1.91	62	1.54	1.13	0.021	101	222	389
DAM	DAM									
	CED	BW	WW	YW	SC	HP	MILK	DOC		
	-4	3.8	86	167	1.43	13.4	33	28		
DAM	DAM									
	CLAW	ANGLE	PAP	CW	MARB	RE	FAT	\$M	\$B	\$C
	0.49	0.43	2.55	81	0.96	1.05	-0.016	49	200	308

**Three Embryos Guarantee One Pregnancy**



**Baldrige Heat Seeker H925 Sire of Lot 43**



**Moon Creek Erica of RR H1052 Donor Dam of Lot 43**



**Erica of Ellston X85 Donor Dam of Lot 44**

CK6 CONSULTING  
9800 East Hwy 00  
Hallsville, MO 65255

FIRST CLASS MAIL

DO NOT DELAY



*Annual Production Sale*

August 4, 2023 | 6PM CST

2041 JAY AVENUE | GEORGE, IA 51237

[MOONCREEKANGUSFARM.COM](http://MOONCREEKANGUSFARM.COM)

Catalog designed by  
**HONOR AG**  
*branding*  
402-841-4216