

ROCK RAPIDS • IA

# MOON CREEK

FARMS



*Annual Production Sale*

# AUGUST 5, 2022

6 PM CST | 2041 JAY AVENUE | GEORGE, IOWA 51237

[MOONCREEKANGUSFARM.COM](http://MOONCREEKANGUSFARM.COM)

**DVAuction**  
Broadcasting Real-Time Auctions



Annual Production Sale  
**AUGUST 5, 2022 - 6 PM**

Sale Address: 2041 Jay Ave, George, IA 51237

WATCH AND BID LIVE ON DV AUCTION!  
 Cattle will sell on video screen at the sale site.



Supper will be served sale night with entertainment by Noah Schmitt!



**Korey, Val, Ross, Carter, and Brooklyn Krull**  
 712-330-5459 | [MOONCREEKANGUSFARM.COM](http://MOONCREEKANGUSFARM.COM)

*Welcome!*

We would like to welcome you to our annual female production sale. This year's sale will be a little different as we have decided to host the sale for the first time at our ranch headquarters, located in George, Iowa.

This offering will feature a cross section of our breeding program including donor cows, cow-calf pairs, bred and open heifers, E.T. baby heifer calves, pregnant recipients, and frozen embryos. The goals of our program remain the same - that is to produce problem free cattle in a moderate sized package.

We hope you can join us on August 5 in beautiful Northwest Iowa for a fun-filled evening at Moon Creek Farms. If you are unable to attend in person, the sale will be broadcast on DVAuction, with videos available for your viewing. Please do not hesitate to contact us prior to the sale with any questions. You are also welcome to stop out to view cattle at any time. Thank you for your consideration in our program.

God Bless, *KJ Krull*



**SALE STAFF**

CHRIS EARL 630-675-6559  
 WES TIEMANN 816-244-4462  
 KODY FLEEMAN 5753-881-0117

**AUCTIONEER**

WES TIEMANN 816-244-4462



**GENERAL SALE INFORMATION**

**LIVESTOCK PRESS**

Adam Conover, American Angus Association 816-676-8560  
 Austin Brandt, Midwest Marketer 712-621-1829  
 Mike Sorenson, Livestock Plus 641-745-7949  
 Sale Consultant: Glen Davis 219-776-7584

**UPDATES**

All update sheets and announcements on sale day take precedence over this written material.

**TERMS**

Cattle will sell under the standard terms of American Angus Association.

**TRUCKING**

Trucking can be arranged with reliable firms if you need assistance.



**1**

**BALDRIDGE ISABEL G1173**

**1 Baldrige Isabel G1173**

**COW | REG 19606909 | DOB 04/27/19 | TATTOO G1173**

KM Broken Bow 002#  
 Spring Cove Reno 4021  
 Spring Cove Liza 021  
 Mill Bar Hickok 7242#  
**Baldrige Isabel D753**  
 Baldrige Isabel Y69

Summitcrest Complete 1P55#  
 Summitcrest Princess OP12#  
 C C A Emblazon 702#  
 Spring Cove Liza 721  
 Connealy Consensus 7229#  
 Mill Bar Bemindful Maid 6304  
 Styles Upgrade J59#  
 Baldrige Isabel T935

CED	BW	WW	YW	SC	HP	MILK	DOC										
5	2.6	89	157	1.30	15.2	30	35										
		1%	1%	15%	15%	25%	1%										
CLAW	ANGLE	PAP	CW	MARB	RE	FAT	\$M	\$B	\$C								
0.45	0.48	1.57	65	0.88	0.62	0.026	78	160	286								
25%			4%	15%	30%		10%	10%	5%								
CED	BW	WW	YW	DMI	YH	SC	DOC	HP	CEM	MLK	NW	MH	CW	MRB	RE	FAT	TEND
79	92	4	5	100	40	5	2	11	21	38	8	26	13	21	55	82	83

*Sells Open*

*Lots 1-1D*

Baldrige Isabel G1173 is a direct daughter of the \$160,000, Baldrige Isabel D753, owned by Shady Brook Angus in TN. D753 has produced two daughters by Confidence Plus each selling for \$40,000 through the Baldrige Performance Angus Female Sale. A full sister to G1173, Baldrige Isabel H766, sold to Riverbend Ranches, ID for \$37,500 in the 22 Baldrige Performance Angus Female Sale. A maternal sister by Identified sold in that same sale for \$30,000 to Pollard Farms, OK. Baldrige Isabel J626, a yearling heifer and maternal sister to Lot 1 sold for \$16,000 to Boyd Beef, KY. Maternal brothers to Lot 1 include the popular Baldrige Abrams, Sherman, Limitless, and Pershing. The full brother to Lot 1 stands at ABS, Baldrige Highlander. The story that the D753 has to tell runs deep with much more to come.



**BALDRIDGE ISABEL D753** Donor Dam of Lot 1



**BALDRIDGE ISABEL Y69** Foundation Donor of the Isabel Cow Family



**BALDRIDGE HIGHLANDER \$50,000** Full Brother to Lot 1 Purchased by ABS Global





**HART SHOWCASE 1082** Sire of Lot 1A



**POSS RATIFIED** Sire of Lot 1C



**HCC WHITEWATER 9010** Sire of Lot 1D

### 1A Hart Showcase x G1173 *Embryos*

**SELLING FOUR EMBRYOS**

Musgrave 316 Exclusive	LD Capitalist 316
Hart Showcase 1082	Musgrave Prim Lassie 163-386
Hart Whitney 3206	Connealy Cavalry 1149#
Spring Cove Reno 4021	Hart Whitney 0244#
Baldrige Isabel G1173	KM Broken Bow 002#
Baldrige Isabel D753	Spring Cove Liza 021
	Mill Bar Hickok 7242#
	Baldrige Isabel Y69

CED	BW	WW	YW	SC	HP	MILK	DOC
7	1.2	89	157	1.31	14.9	27	29

CLAW	ANGLE	PAP	CW	MARB	RE	FAT	\$M	\$B	\$C
0.48	0.50	1.04	69	1.05	0.75	0.029	78	176	306

*EPDs are an average of the sire and dam.*

### 1B Moon Creek Isabel K1401

**COW | REG 20349676 | DOB 01/22/22 | TATTOO K1401**

A A R Ten X 7008 S A#	Mytty In Focus#
Gardens Cache	A A R Lady Kelton 5551#
Green Garden Rita K078	Gardens Wave#
Spring Cove Reno 4021	Green Garden Rita D076 S1
Baldrige Isabel G1173	KM Broken Bow 002#
Baldrige Isabel D753	Spring Cove Liza 021
	Mill Bar Hickok 7242#
	Baldrige Isabel Y69

CED	BW	WW	YW	SC	HP	MILK	DOC
2	3.3	86	154	1.73	14.8	22	27
		3%	2%	10%	20%		15%

CLAW	ANGLE	PAP	CW	MARB	RE	FAT	\$M	\$B	\$C
0.49	0.44	1.46	72	1.27	0.88	0.033	68	201	329
	30%		10%	4%	15%			2%	1%

CED	BW	WW	YW	DMI	YH	SC	DOC	HP	CEM	MLK	MW	MH	CW	MRB	RE	FAT	TEND
77	86	1	2	98	22	4	11	19	18	74	1	5	2	5	9	76	67

**ANGUSGS**

### 1C Poss Ratified x G1173 *Pregnancy*

**DUE DECEMBER 20, 2022**

Poss Rawhide	Poss Maverick
Poss Ratified	Poss Blueblood 6502
Poss Rita 5116#	Connealy Uptown 098E#
Spring Cove Reno 4021	Rita 12D8 of 5F56 Rito 5M2
Baldrige Isabel G1173	KM Broken Bow 002#
Baldrige Isabel D753	Spring Cove Liza 021
	Mill Bar Hickok 7242#
	Baldrige Isabel Y69

CED	BW	WW	YW	SC	HP	MILK	DOC
10	0.7	85	146	0.94	15.8	32	36

CLAW	ANGLE	PAP	CW	MARB	RE	FAT	\$M	\$B	\$C
0.52	0.50	0.49	67.5	1.14	0.79	0.039	94	183	331

*EPDs are an average of the sire and dam.*

### 1D Moon Creek Isabel K1542

**COW | REG 20384681 | DOB 05/30/22 | TATTOO K1542**

Mill Brae Identified 4031#	Koupals B&B Identity#
HCC Whitewater 9010	Mill Brae Pro Blackcap 1092
Rock Creek Sara 6066	Silveiras Conversion 8064
Spring Cove Reno 4021	H P C A Confidence A322
Baldrige Isabel G1173	KM Broken Bow 002#
Baldrige Isabel D753	Spring Cove Liza 021
	Mill Bar Hickok 7242#
	Baldrige Isabel Y69

CED	BW	WW	YW	SC	HP	MILK	DOC
7	1.4	81	144	1.13	14.9	30	27
		10%	5%	20%	20%		15%

CLAW	ANGLE	PAP	CW	MARB	RE	FAT	\$M	\$B	\$C
0.52	0.46	1.76	59	1.12	0.96	0.033	78	174	304
			25%	10%	10%			15%	5%

CED	BW	WW	YW	DMI	YH	SC	DOC	HP	CEM	MLK	MW	MH	CW	MRB	RE	FAT	TEND

**ANGUSGS**

*Genomic data pending.*



**BALDRIDGE SHERMAN** \$65,000 Son of Cache x D753  
Purchased by Riverbend Ranch



**BALDRIDGE ABRAMS** \$30,000 Son of Cache x D753  
Purchased by Erickson Ranch



**BALDRIDGE PERSHING** \$25,000 Son of Cache x D753  
Purchased by Riverbend Ranch

# Lot 1F

Baldrige Isabel G795 is a model Confidence Plus three-year-old with extra fleshing ability, depth of body and feet and udder quality. G795 stacks Isabel Y69 and Elbanna 1209 and has heaviest 2% of the breed weaning and yearling growth and top 25% CED, plus strong marbling and ribeye. A maternal sister to Sherman at Riverbend (ID), Highlander at ABS Global and Limitless at Grimmuss Cattle [CA].



CONNELY CLARITY Sire of Lot 1E

BALDRIDGE ISABEL G795 Dam of Lot 1B and Maternal Sister to Lot 1 Baldrige Isabel G1173

**1E Moon Creek Isabel K1416**  
**COW | REG 20347231 | DOB 02/16/22 | TATTOO K1416**

Cherry Creek Land Grant  
**Connealy Clarity**  
 Breshie of Conanga 6988  
 Spring Cove Reno 4021  
**Baldrige Isabel G1173**  
 Baldrige Isabel D753

K C F Bennett Homestead#  
 Cherry Crk Eva B27 M  
 Connealy Confidence Plus#  
 Brelly of Conanga 367  
 KM Broken Bow 002#  
 Spring Cove Liza 021  
 Mill Bar Hickok 7242#  
 Baldrige Isabel Y69

CED	BW	WW	YW	SC	HP	MILK	DOC
9	1.7	95	169	0.99	15.8	19	36
30%		1%	1%		15%		1%

CLAW	ANGLE	PAP	CW	MARB	RE	FAT	\$M	\$B	\$C
0.45	0.44	5.79	85	0.95	1.00	0.016	76	204	341
30%	30%		1%	20%	10%		20%	1%	1%

CED	BW	WW	YW	DMI	YH	SC	DOC	HP	CEM	MLK	MW	MH	CW	MRB	RE	FAT	TEND
43	69	2	1	99	27	17	1	6	66	87	1	8	1	13	10	72	35

ANGUSGS

**1F Hart Showcase x G795** *Embryos*  
**SELLING FOUR EMBRYOS**

Musgrave 316 Exclusive  
**Hart Showcase 1082**  
 Hart Whitney 3206  
 Connealy Confidence Plus#  
**Baldrige Isabel D795**  
 Baldrige Isabel D753

LD Capitalist 316  
 Musgrave Prim Lassie 163-386  
 Connealy Cavalry 1149#  
 Hart Whitney 0244#  
 Connealy Confidence 0100#  
 Elbanna of Conanga 1209  
 Mill Bar Hickok 7242#  
 Baldrige Isabel Y69

CED	BW	WW	YW	SC	HP	MILK	DOC
9	0.4	85	151	1.14	11.6	27	27

CLAW	ANGLE	PAP	CW	MARB	RE	FAT	\$M	\$B	\$C
0.51	0.49	2.47	65	1.06	0.86	0.031	70	177	300

EPDs are an average of the sire and dam.

MOON CREEK FARMS

BRINGING QUALITY SERVICE TO THE CATTLE INDUSTRY





**2A**

**MOON CREEK ISABEL K1429**

**Moon Creek Isabel K1429**

**2A**

**COW | REG 20347228 | DOB 01/07/22 | TATTOO K1429**

Cherry Creek Land Grant  
 Connealy Clarity  
 Breshie of Conanga 6988  
 Spring Cove Reno 4021  
 Baldridge Isabel G1170  
 Baldridge Isabel D753

K C F Bennett Homestead#  
 Cherry Crk Eva B27 M  
 Connealy Confidence Plus#  
 Brelly of Conanga 367  
 KM Broken Bow 002#  
 Spring Cove Liza 021  
 Mill Bar Hickok 7242#  
 Baldridge Isabel Y69

CED	BW	WW	YW	SC	HP	MILK	DOC										
9	-0.1	73	136	1.18	16.5	25	29										
30%	25%	15%	10%	30%	10%		10%										
CLAW	ANGLE	PAP	CW	MARB	RE	FAT	\$M	\$B	\$C								
0.39	0.55	4.12	65	1.10	0.93	-0.014	83	193	333								
10%		15%	10%	15%	20%	10%	3%	1%									
CED	BW	WW	YW	DMI	YH	SC	DOC	HP	CEM	MLK	MW	MH	CW	MRB	RE	FAT	TEND
45	40	7	2	97	46	9	13	5	88	59	14	30	2	8	4	15	71

ANGUS<sup>GS</sup>

*Lots 2A-2D*

The Baldridge Isabel G1170 donor dam is the full sister to Lot 1. Read her footnote on the success story of the famous Baldridge Isabel D753. The sire side of the Lot 2's is as progressive as you can mate with the outstanding DNA power of Connealy Clarity, the phenotype presence of Whitewater, Remington's powerhouse pedigree and the documentation of the full brothers and sisters to the Cache Lot. The phenotype in this cow family is impeccable on top of the great fertility and flushing ability that the great Y69 cow passes on.



**CONNELY CLARITY** Sire of Lot 2A



**BALDRIDGE ISABEL G1170** Donor Dam to Lots 2A-D and Full Sister to Lot 1





**BALDRIDGE LIMITLESS** \$60,000 Maternal Brother to the Dam of Lots 2A-D, Purchased by Grimmius Cattle Co



**BALDRIDGE HARNESS** \$48,000 Maternal Brother to the Dam of Lots 2A-D, Purchased by Skogen Livestock

**2B** **Moon Creek Isabel K1507**  
**COW** | REG 20373237 | DOB 05/27/22 | TATTOO K1507

Mill Brae Identified 4031#  
**HCC Whitewater 9010**  
 Rock Creek Sara 6066  
 Spring Cove Reno 4021  
**Baldrige Isabel G1170**  
 Baldrige Isabel D753

Koupals B&B Identity#  
 Mill Brae Pro Blackcap 1092  
 Silveiras Conversion 8064  
 H P C A Confidence A322  
 KM Broken Bow 002#  
 Spring Cove Liza 021  
 Mill Bar Hickok 7242#  
 Baldrige Isabel Y69

CED	BW	WW	YW	SC	HP	MILK	DOC
7	0.4	73	131	0.94	15.3	26	25
	30%	15%	15%		20%		20%

CLAW	ANGLE	PAP	CW	MARB	RE	FAT	\$M	\$B	\$C
0.51	0.50	1.63	52	1.28	0.96	0.023	76	178	307
				4%	10%		20%	10%	4%

ANGUSGS



**2C** **Poss Remington x G1170** *Pregnancy*  
**DUE DECEMBER 20, 2022**

Connealy Clarity  
**Poss Remington**  
 Poss Blueblood 6502  
 Spring Cove Reno 4021  
**Baldrige Isabel G1170**  
 Baldrige Isabel D753

Cherry Creek Land Grant  
 Breshie of Conanga 6988  
 Poss Easy Impact 0119  
 Poss Blueblood 920  
 KM Broken Bow 002#  
 Spring Cove Liza 021  
 Mill Bar Hickok 7242#  
 Baldrige Isabel Y69

CED	BW	WW	YW	SC	HP	MILK	DOC
7	0.5	78	136	0.74	16.9	26	30

CLAW	ANGLE	PAP	CW	MARB	RE	FAT	\$M	\$B	\$C
0.41	0.52	2.11	63.5	1.10	0.73	0.016	86	177	322

*EPDs are an average of the sire and dam.*

**2D** **Connealy Craftsman x G1170** *Embryos*  
**SELLING FOUR EMBRYOS**

Sitz Resilient 10208  
**Connealy Craftsman**  
 Black Cathy of Conanga 8521  
 Spring Cove Reno 4021  
**Baldrige Isabel G1170**  
 Baldrige Isabel D753

Sitz Stellar 726D  
 Sitz Miss Burgess 1856  
 Connealy Niobrara 5451  
 Black Carla of Conanga 450  
 KM Broken Bow 002#  
 Spring Cove Liza 021  
 Mill Bar Hickok 7242#  
 Baldrige Isabel Y69

CED	BW	WW	YW	SC	HP	MILK	DOC
7	1.1	78	139	0.79	17.2	31	28

CLAW	ANGLE	PAP	CW	MARB	RE	FAT	\$M	\$B	\$C
0.41	0.49	0.76	60.5	1.09	0.79	0.008	90	177	319

*EPDs are an average of the sire and dam.*



**POSS REMINGTON** Sire of Lot 2C



**CONNELLY CRAFTSMAN** Sire of Lot 12D - The new \$500,000 ST Genetics and Select Sires purchase who is a leader for Claw, MB, and Indexes with an outcross pedigree.



# Lots 3A-3C

Baldrige Isabel G1172 is a full sister to the donors in Lots 1 and 2. The consistency of these sisters gives so much confidence to their breeding value and potency coming through D753. These three matings on this page are so fresh, relevant, and valuable. Be the first to get your hands on the new and popular Showcase and Ratified or capture the already popular Clarity.



BALDRIDGE ISABEL G1172 Donor Dam of Lots 3A-C



POSS RATIFIED Sire of Lot 3B



HART SHOWCASE 1082 Sire to Lot 3C

## 3A Moon Creek Isabel K1518

**COW** | REG 20372884 | DOB 05/28/22 | TATTOO K1518

Cherry Creek Land Grant  
**Connealy Clarity**  
 Breshie of Conanga 6988  
 Spring Cove Reno 4021  
**Baldrige Isabel G1172**  
 Baldrige Isabel D753

K C F Bennett Homestead#  
 Cherry Crk Eva B27 M  
 Connealy Confidence Plus#  
 Brelly of Conanga 367  
 KM Broken Bow 002#  
 Spring Cove Liza 021  
 Mill Bar Hickok 7242#  
 Baldrige Isabel Y69

CED	BW	WW	YW	SC	HP	MILK	DOC		
7	1.3	80	141	1.10	18.4	23	29		
		10%	10%		3%		10%		
CLAW	ANGLE	PAP	CW	MARB	RE	FAT	\$M	\$B	\$C
0.40	0.46	5.06	62	1.01	0.72	0.001	90	176	318
15%			20%	15%			2%	10%	2%

CED BW WW YW DMI YH SC DOC HP CEM MLK MW MH CW MRB RE FAT TEND

ANGUSGS

*Genomic data pending.*

## 3B Poss Ratified x G1172

**Pregnancy**

**DUE DECEMBER 21, 2022**

Poss Rawhide  
**Poss Ratified**  
 Poss Rita 5116#  
 Spring Cove Reno 4021  
**Baldrige Isabel G1172**  
 Baldrige Isabel D753

Poss Maverick  
 Poss Blueblood 6502  
 Connealy Uptown 098E#  
 Rita 12D8 of 5F56 Rito 5M2  
 KM Broken Bow 002#  
 Spring Cove Liza 021  
 Mill Bar Hickok 7242#  
 Baldrige Isabel Y69

CED	BW	WW	YW	SC	HP	MILK	DOC		
9	0.3	81	138	0.89	17.5	29	30		
CLAW	ANGLE	PAP	CW	MARB	RE	FAT	\$M	\$B	\$C
0.50	0.50	1.72	62	1.17	0.67	0.036	94	180	327

*EPDs are an average of the sire and dam.*

## 3C Hart Showcase x G1172

**Embryos**

**SELLING FOUR EMBRYOS**

Musgrave 316 Exclusive  
**Hart Showcase 1082**  
 Hart Whitney 3206  
 Spring Cove Reno 4021  
**Baldrige Isabel G1172**  
 Baldrige Isabel D753

LD Capitalist 316  
 Musgrave Prim Lassie 163-386  
 Connealy Cavalry 1149#  
 Hart Whitney 0244#  
 KM Broken Bow 002#  
 Spring Cove Liza 021  
 Mill Bar Hickok 7242#  
 Baldrige Isabel Y69

CED	BW	WW	YW	SC	HP	MILK	DOC		
7	0.8	85	148	1.26	16.7	24	22		
CLAW	ANGLE	PAP	CW	MARB	RE	FAT	\$M	\$B	\$C
0.46	0.50	2.27	63.5	1.07	0.63	0.026	78	173	302

*EPDs are an average of the sire and dam.*





# ZA Isabel H048

4

COW | REG 19781638 | DOB 02/27/20 | TATTOO H048

Koupals B&B Identity#  
**Mill Brae Identified 4031#**  
 Mill Brae Pro Blackcap 1092  
 LD Emblazon 999#  
**Baldrige Isabel C273**  
 Baldrige Isabel T935

Sitz Upward 307R#  
 B&B Erica 605#  
 GAR-EGL Protege#  
 Mill Brae FL Blackcap 5002  
 O C C Emblazon 854E#  
 SH Forever Lady 3124 5118#  
 Baldrige Kaboom K243 KCF#  
 Baldrige Isabel P4527

CED	BW	WW	YW	SC	HP	MILK	DOC
11	-1.4	74	131	0.21	15.9	27	4
15%	10%	15%	15%		15%		

CLAW	ANGLE	PAP	CW	MARB	RE	FAT	\$M	\$B	\$C
0.58	0.47	2.74	41	1.14	0.96	0.029	86	151	282
			10%	10%		4%	30%	15%	

CED	BW	WW	YW	DMI	YH	SC	DOC	HP	CEM	MLK	MW	MH	CW	MRB	RE	FAT	TEND	ANGUS <sup>GS</sup>
21	7	55	45	50	99	94	94	12	33	60	98	99	89	8	16	60	38	

*Sells open.* A direct daughter of the powerhouse, Baldrige Isabel C273, who is a maternal sister the Baldrige Isabel Y69. C273 would be one of the most powerfully made donors you could lay your eyes on. When you blend the incredible pedigree of Identified back to 999 and the Isabel cow family you have tapped into the top end of maternal Angus genetics. We really like the feminine look this female possesses along with an outstanding EPD profile.



4

ZA ISABEL H048

# Moon Creek Isabel J1261

5

COW | REG 20182482 | DOB 02/06/21 | TATTOO J1261

Mogck Bullseye#  
**Hoover No Doubt**  
 Miss Blackcap Ellston J2  
 Basin Payweight 1682#  
**Baldrige Isabel E294**  
 Baldrige Isabel Y69

MOGCK Sure Shot#  
 Mogck Mary 1255  
 SydGen C C & 7#  
 Miss Blackcap Ellston D154#  
 Basin Payweight 006S#  
 21AR O Lass 7017  
 Styles Upgrade J59#  
 Baldrige Isabel T935

CED	BW	WW	YW	SC	HP	MILK	DOC
0	2.7	87	155	1.74	8.9	17	26
		2%	2%	10%			15%

CLAW	ANGLE	PAP	CW	MARB	RE	FAT	\$M	\$B	\$C
0.50	0.50	4.96	73	0.83	0.68	0.041	55	174	281
			5%	30%			10%	15%	

CED	BW	WW	YW	DMI	YH	SC	DOC	HP	CEM	MLK	MW	MH	CW	MRB	RE	FAT	TEND	ANGUS <sup>GS</sup>
50	47	3	4	100	66	11	23	69	22	96	7	30	7	35	38	88	60	

*All to Poss Ratified on 6/29/22.* This is a powerhouse mating of the highly popular are rare, Hoover No Doubt, and the stunning combination of 1682 and Baldrige Isabel Y69. A full sister in blood to Lot 5 was many breeders phenotype favorite of the 2022 Baldrige Female sale, who sold for \$19,000 to Express Ranches, OK.



5

MOON CREEK ISABEL J1261



BALDRIDGE ISABEL C273 Donor Dam to Lot 4



BALDRIDGE ISABEL E294 Donor Dam to Lot 5





**BALDRIDGE BEAST MODE** Maternal Brother to C771  
Owned by Baldridge Performance Angus, Sikes Ranch,  
and Assman Land and Cattle



**BALDRIDGE ISABEL C771** Donor Dam to Lot 6



**BALDRIDGE ISABEL Y69** Foundation Donor of the  
Isabel Cow Family

## 6 Moon Creek Isabel H1122

**6** COW | REG 19934355 | DOB 06/08/20 | TATTOO H1122

SydGen Exceed 3223  
SydGen Enhance  
SydGen Rita 2618  
Connealy Consensus 578B  
Baldridge Isabel C771  
Baldridge Isabel Y69

SydGen Googol  
SydGen Forever Lady 1255  
SydGen Liberty GA 8627#  
Fox Run Rita 9308#  
Connealy Consensus#  
Powso of Conanga 687 7567#  
Styles Upgrade J59#  
Baldridge Isabel T935

CED	BW	WW	YW	SC	HP	MILK	DOC
0	3.9	87	161	0.48	8.3	26	35
		2%	1%				1%

CLAW	ANGLE	PAP	CW	MARB	RE	FAT	\$M	\$B	\$C
0.44	0.44	7.97	64	0.68	0.53	-0.010	71	164	284
25%	30%		15%			25%	30%	20%	15%

CED	BW	WW	YW	DMI	YH	SC	DOC	HP	CEM	MLK	MW	MH	CW	MRB	RE	FAT	TEND
84	91	30	4	80	34	70	4	86	12	75	41	30	36	51	70	20	18

*Sells open with Tehama Tahoe Heifer Calf at side.* A growthy Isabel who is a direct daughter of Baldridge Isabel C771 who has 41 genomic progenies on record. This cow family mirrors the same pedigree as the great Baldridge Isabel D752 and D753 documented well in Lots 1-3.

## 6A Moon Creek Isabel K1536

**6A** COW | REG 20383654 | DOB 06/18/22 | TATTOO K1536

Tehama Upward Y238  
Tehama Tahoe B767  
Tehama Mary Blackbird Y684  
SydGen Enhance  
Moon Creek Isabel H1122  
Baldridge Isabel C771

Sitz Upward 307R#  
Tehama Elite Blackbird T735  
S A V Final Answer 0035#  
Tehama Mary Blackbird T073  
SydGen Exceed 3223  
SydGen Rita 2618  
Connealy Consensus 578B  
Baldridge Isabel Y69

CED	BW	WW	YW	SC	HP	MILK	DOC
5	2.0	83	148	0.85	10.4	29	29
		4%	4%			25%	10%

CLAW	ANGLE	PAP	CW	MARB	RE	FAT	\$M	\$B	\$C
0.45	0.46	5.17	58	0.78	0.71	0.002	80	161	289
30%			25%				10%	20%	10%

CED	BW	WW	YW	DMI	YH	SC	DOC	HP	CEM	MLK	MW	MH	CW	MRB	RE	FAT	TEND

Genomic data pending.

## Lots 7A-8

The Erica of Ellstons come to us via R65, who was a sister of the Hoover Angus "Fab Five" flush. R65 was our highlight pick of the 2018 Hoover sale where her sister, Erica of Ellston R96, brought \$48,000 to Eagle Hill in IA. Maternal sister, Baldridge Erica E167, was a \$35,000 selection by the Greyhound Group, at the Foundation Female Sale in Denver. The Erica's go back to the undisputed number one cow at Hoover Angus, G366, through her daughter owned by Baldridge Performance Angus, L5, a cow that has made an excellent name for herself in the Angus breed.



**ERICA OF ELLSTON R65** Donor Dam to Lot 7A-C and Granddam to Lots 7D and 8

*Erica of Ellston Cow Family*

## 7A Moon Creek Erica of RR K1407

COW | REG 20347292 | DOB 01/08/22 | TATTOO K1407

Cherry Creek Land Grant  
**Connealy Clarity**  
 Breshie of Conanga 6988  
 Bruns Top Cut 373#  
**Erica of Ellston R65**  
 Erica of Ellston L5

K C F Bennett Homestead#  
 Cherry Crk Eva B27 M  
 Connealy Confidence Plus#  
 Brley of Conanga 367  
 Bruns Uppercut 610  
 Dakota Miss 669 Baf#  
 Connealy Counselor#  
 Erica of Ellston G366#

CED	BW	WW	YW	SC	HP	MILK	DOC										
8	1.6	79	133	1.67	12.3	32	27										
		10%	15%	10%		15%	15%										
CLAW	ANGLE	PAP	CW	MARB	RE	FAT	\$M	\$B	\$C								
0.40	0.54	2.04	71	1.17	1.12	-0.020	87	195	340								
			10%	10%	3%	15%	4%	2%	1%								
CED	BW	WW	YW	DMI	YH	SC	DOC	HP	CEN	MLK	MW	MH	CW	MRB	RE	FAT	TEND
29	49	9	26	87	17	11	15	36	86	19	48	64	4	2	3	34	68

ANGUS GS



7A MOON CREEK ERICA OF RR K1407

## 7B Moon Creek Erica of RR H1025

COW | REG 19997855 | DOB 01/29/20 | TATTOO H1025

Connealy Confidence 0100#  
**Connealy Confidence Plus#**  
 Elbanna of Conanga 1209  
 Bruns Top Cut 373#  
**Erica of Ellston R65**  
 Erica of Ellston L5

Connealy Tobin  
 Becca Gala of Conanga 8281  
 Connealy Consensus#  
 Elbasta of Conanga 9703  
 Bruns Uppercut 610  
 Dakota Miss 669 Baf#  
 Connealy Counselor#  
 Erica of Ellston G366#

CED	BW	WW	YW	SC	HP	MILK	DOC										
12	-1.5	58	110	1.05	13.4	33	20										
	10%	10%				10%											
CLAW	ANGLE	PAP	CW	MARB	RE	FAT	\$M	\$B	\$C								
0.40	0.49	1.08	55	1.05	0.78	0.047	84	175	311								
				15%	30%		10%	10%	3%								
CED	BW	WW	YW	DMI	YH	SC	DOC	HP	CEN	MLK	MW	MH	CW	MRB	RE	FAT	TEND
24	24	48	35	84	40	38	37	30	59	17	84	90	15	6	26	95	92

ANGUS GS

AI to Poss Remington on 4-13-22. Examined safe.



7B MOON CREEK ERICA OF RR H1025

## 7C Moon Creek Erica of RR H1020

COW | REG 19997786 | DOB 01/23/20 | TATTOO H1020

KM Broken Bow 002#  
**Spring Cove Reno 4021**  
 Spring Cove Liza 021  
 Bruns Top Cut 373#  
**Erica of Ellston R65**  
 Erica of Ellston L5

Summitcrest Complete 1P55#  
 Summitcrest Princess 0P12#  
 C C A Emblazon 702#  
 Spring Cove Liza 721  
 Bruns Uppercut 610  
 Dakota Miss 669 Baf#  
 Connealy Counselor#  
 Erica of Ellston G366#

CED	BW	WW	YW	SC	HP	MILK	DOC										
10	-0.1	79	134	0.68	14.6	28	29										
	20%	25%	10%	15%		25%	10%										
CLAW	ANGLE	PAP	CW	MARB	RE	FAT	\$M	\$B	\$C								
0.48	0.65	2.47	57	1.17	0.75	0.001	79	165	293								
				30%	10%	30%		15%	10%								
CED	BW	WW	YW	DMI	YH	SC	DOC	HP	CEN	MLK	MW	MH	CW	MRB	RE	FAT	TEND
4	4	25	42	98	73	51	4	13	52	44	50	84	40	4	44	52	91

ANGUS GS

AI to Poss Remington on 5-25-22. Examined safe. Bull calf at side #20362031.



7C MOON CREEK ERICA OF RR H1020

## 7D Hart Showcase x G1156

Embryos

SELLING THREE EMBRYOS

Musgrave 316 Exclusive  
**Hart Showcase 1082**  
 Hart Whitney 3206  
 Baldrige Alternative E125  
**Moon Creek Erica of RR G1156**  
 Erica of Ellston R65

LD Capitalist 316  
 Musgrave Prim Lassie 163-386  
 Connealy Cavalry 1149#  
 Hart Whitney 0244#  
 Poss Easy Impact 0119  
 Baldrige Blackbird A030  
 Bruns Top Cut 373#  
 Erica of Ellston L5

CED	BW	WW	YW	SC	HP	MILK	DOC		
11	-0.1	78	144	1.06	11.7	22	23		
CLAW	ANGLE	PAP	CW	MARB	RE	FAT	\$M	\$B	\$C
0.52	0.56	-0.80	77	1.01	0.97	0.017	55	199	312

EPDs are an average of the sire and dam.



MOON CREEK ERICA OF RR G1156  
 Donor Dam to Lots 7D-8



8

MOON CREEK ERICA OF RR J1124

### 8 Moon Creek Erica of RR J1124

COW | REG 20064693 | DOB 05/21/21 | TATTOO J1124

Coleman Charlo 0256#  
**S A V Rainfall 6846**  
 S A V Blackcap May 4136  
 Baldrige Alternative E125  
**Moon Creek Erica of RR 61156**  
 Erica of Ellston R65

O C C Paxton 730P#  
 Bohi Abigale 6014  
 S A V 8180 Traveler 004#  
 S A V May 2397#  
 Poss Easy Impact 0119  
 Baldrige Blackbird A030  
 Bruns Top Cut 373#  
 Erica of Ellston L5

CED	BW	WW	YW	SC	HP	MILK	DOC										
9	0.5	59	118	1.02	11.3	27	30										
30%			30%			5%											
CLAW	ANGLE	PAP	CW	MARB	RE	FAT	\$M	\$B	SC								
0.39	0.48	0.50	50	0.87	0.55	0.030	77	161	286								
10%			25%			15%		20%		10%							
CED	BW	WW	YW	DMI	YH	SC	DOC	HP	CEN	MLK	MW	MH	CW	MRB	RE	FAT	TEND
20	16	75	30	79	84	36	3	55	45	56	83	88	41	13	68	91	16

ANGUSGS

*Sells open*



ERICA OF ELLSTON X85 Donor Dam to Lot 9

### 9 Connealy Craftsman x X85 *Pregnancy*

DUE FEBRUARY 4, 2023

Sitz Resilient 10208  
**Connealy Craftsman**  
 Black Cathy of Conanga 8521  
 Hoover No Doubt  
**Erica of Ellston X85**  
 Erica of Ellston S7

Sitz Stellar 726D  
 Sitz Miss Burgess 1856  
 Connealy Niobrara 5451  
 Black Carla of Conanga 450  
 Mogck Bullseye#  
 Miss Blackcap Ellston J2  
 Baldrige 38 Special  
 Erica of Ellston L5

CED	BW	WW	YW	SC	HP	MILK	DOC		
3	2.8	85	157	1.04	14.6	37	28		
CLAW	ANGLE	PAP	CW	MARB	RE	FAT	\$M	\$B	SC
0.45	0.43	1.57	75	0.94	0.96	0.002	79	188	323

*EPDs are an average of the sire and dam.*



ERICA OF ELLSTON Z37 Donor Dam to Lot 10

### 10 Hart Showcase x Z37 *Embryos*

SELLING THREE EMBRYOS

Musgrave 316 Exclusive  
**Hart Showcase 1082**  
 Hart Whitney 3206  
 Hoover No Doubt  
**Erica of Ellston Z37**  
 Erica of Ellston S7

LD Capitalist 316  
 Musgrave Prim Lassie 163-386  
 Connealy Cavalry 1149#  
 Hart Whitney 0244#  
 Mogck Bullseye#  
 Miss Blackcap Ellston J2  
 Baldrige 38 Special  
 Erica of Ellston L5

CED	BW	WW	YW	SC	HP	MILK	DOC		
5	1.1	93	163	1.39	13.0	23	23		
CLAW	ANGLE	PAP	CW	MARB	RE	FAT	\$M	\$B	SC
0.47	0.51	2.43	70	1.04	0.83	0.040	68	174	294

*EPDs are an average of the sire and dam.*

## Lots 9-10

Hailing from the same great cow family as Lot 7 these two sisters are both daughters of Erica of Ellston S7 whose daughter by Entice sold for \$32,000 as a bred heifer to Pine View Angus, IA in the 2021 Hoover Angus sale. The early ability to capture Connealy Craftsman and Hart Showcase is priceless on top of this well documented cow family. This will make for a rare opportunity to tap into genetics of tomorrow.



ERICA OF ELLSTON S7 Granddam to Lots 9 and 10



# Lots 11A-11B

Moon Creek Ellston H1052 is a granddaughter of the excellent Ellston R65 documented in Lots 7-10. She is sired by Hombre, who is a full brother the dam of Lot 1. The heifer calf by Iconic and pregnancy by Remington are right on for today's marketplace and will excel for data and phenotype. This pedigree allows you to capture two great cow families from two great firms.



MOON CREEK ERICA OF RR H1052 Donor Dam of Lots 11A-11B

**11A** **Moon Creek Erica of RR K1520**

**COW** | REG 20374645 | DOB 05/08/2022 | TATTOO K1520

Musgrave 316 Stunner  
**DB Iconic G95**  
 DB Ms Discovery D13  
 Baldrige Hombre D748  
**Moon Creek Erica of RR H1052**  
 Moon Creek Erica of RR 813F

LD Capitalist 316  
 MCATL Blackbird 831-1378#  
 V A R Discovery 2240#  
 DB Ms Final Tool 4120  
 Mill Bar Hickok 7242#  
 Baldrige Isabel Y69  
 Baldrige 38 Special  
 Erica of Ellston R65

CED	BW	WW	YW	SC	HP	MILK	DOC
7	1.4	96	170	1.21	13.4	29	27
		1%	1%	30%		25%	15%

CLAW	ANGLE	PAP	CW	MARB	RE	FAT	\$M	\$B	\$C
0.51	0.50	1.83	81	1.18	0.86	0.035	69	197	325
			2%	10%	20%			2%	2%

*Genomic scores available sale day.*

**11B** **Poss Remington x H1052** *Pregnancy*

**DUE FEBRUARY 4, 2023**

Connealy Clarity  
**Poss Remington**  
 Poss Blueblood 6502  
 Baldrige Hombre D748  
**Moon Creek Erica of RR H1052**  
 Moon Creek Erica of RR 813F

Cherry Creek Land Grant  
 Breshie of Conanga 6988  
 Poss Easy Impact 0119  
 Poss Blueblood 920  
 Mill Bar Hickok 7242#  
 Baldrige Isabel Y69  
 Baldrige 38 Special  
 Erica of Ellston R65

CED	BW	WW	YW	SC	HP	MILK	DOC
7	0.7	87	152	0.76	15.7	29	29

CLAW	ANGLE	PAP	CW	MARB	RE	FAT	\$M	\$B	\$C
0.41	0.48	1.64	79	0.86	0.86	0.019	87	177	323

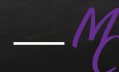
*EPDs are an average of the sire and dam.*



DB ICONIC G95 Sire of Lot 11A



POSS REMINGTON Sire of Lot 11B



# Lots 12-12D

Moon Creek Erica of RR 813F a direct daughter of R65 documented in Lots 7-11. 813F entered the donor program after posting 2BW@98, 1 WW@137 and 1 YW@131. She has been a prolific producer bringing the powerful and well documented combination of 38 Special and the great Ericas of Ellston. The multitude of out front and popular sires used in Lots 12A-D are as progressive and relevant as you could ask for in the breed today.



MOON CREEK ERICA OF RR 813F Donor Dam of Lots 12-12D



12

MOON CREEK ERICA OF RR K1406

## 12 Moon Creek Erica of RR K1406

**COW** | REG 20347328 | DOB 02/18/22 | TATTOO K1406

Musgrave 316 Stunner  
**DB Iconic 695**  
 DB Ms Discovery D13  
 Baldrige 38 Special  
**Moon Creek Erica of RR 813F**  
 Erica of Ellston R65

LD Capitalist 316  
 MCA TL Blackbird 831-1378#  
 V A R Discovery 2240#  
 DB Ms Final Tool 4120  
 EF Commando 1366#  
 Baldrige Isabel Y69  
 Bruns Top Cut 373#  
 Erica of Ellston L5

CED	BW	WW	YW	SC	HP	MILK	DOC		
7	0.8	97	175	1.32	12.3	27	26		
		1%	1%	25%			15%		
CLAW	ANGLE	PAP	CW	MARB	RE	FAT	\$M	\$B	\$C
0.49	0.57	2.73	98	1.27	0.82	0.042	59	225	351
			1%	4%	25%			1%	1%

CED	BW	WW	YW	DMI	YH	SC	DOC	HP	CEM	MLK	MW	MH	CW	MRB	RE	FAT	TEND
65	73	1	1	100	2	17	13	34	65	36	1	1	1	3	31	90	61

ANGUS GS



**12A**

# Moon Creek Erica of RR J1120

COW | REG 20117631 | DOB 05/15/21 | TATTOO J1120

Coleman Charlo 0256#  
 S A V Rainfall 6846  
 S A V Blackcap May 4136

Baldrige 38 Special  
 Moon Creek Erica of RR 813F  
 Erica of Ellston R65

O C C Paxton 730P#  
 Bohi Abigale 6014  
 S A V 8180 Traveler 004#  
 S A V May 2397#  
 EF Commando 1366#  
 Baldrige Isabel Y69  
 Bruns Top Cut 373#  
 Erica of Ellston L5

CED	BW	WW	YW	SC	HP	MILK	DOC		
11	-1.4	53	102	0.65	16.3	31	21		
15%	10%				10%	15%			
CLAW	ANGLE	PAP	CW	MARB	RE	FAT	\$M	\$B	\$C
0.34	0.49	0.76	37	0.63	0.86	0.007	91	137	269
4%				20%		2%			25%

CED	BW	WW	YW	DMI	YH	SC	DOC	HP	CEM	MLK	MW	MH	CW	MRB	RE	FAT	TEND
30	23	75	38	67	67	54	16	11	48	19	86	77	51	38	14	36	10

ANGUS<sup>GS</sup>**12A**

MOON CREEK ERICA OF RR J1120

**12B**

# Moon Creek Erica of RR K1523

COW | REG PENDING | DOB 06/09/22 | TATTOO K1523

Sitz Stellar 726D  
 Sitz Resilient 10208  
 Sitz Miss Burgess 1856

Baldrige 38 Special  
 Moon Creek Erica of RR 813F  
 Erica of Ellston R65

Mohnen Substantial 272#  
 SITZ Pride 200B  
 Sitz Top Game 561X#  
 Sitz Miss Burgess 4381  
 EF Commando 1366#  
 Baldrige Isabel Y69  
 Bruns Top Cut 373#  
 Erica of Ellston L5

CED	BW	WW	YW	SC	HP	MILK	DOC		
%	%	%	%	%	%	%	%		
CLAW	ANGLE	PAP	CW	MARB	RE	FAT	\$M	\$B	\$C
%	%	%	%	%	%	%	%	%	%

CED	BW	WW	YW	DMI	YH	SC	DOC	HP	CEM	MLK	MW	MH	CW	MRB	RE	FAT	TEND

ANGUS<sup>GS</sup>

Registration pending awaiting Resilient AI certificate.

**12C**

# Poss Remington x 813F

DUE DECEMBER 20, 2022

*Pregnancy*

Connealy Clarity  
 Poss Remington  
 Poss Blueblood 6502

Baldrige 38 Special  
 Moon Creek Erica of RR 813F  
 Erica of Ellston R65

Cherry Creek Land Grant  
 Breshie of Conanga 6988  
 Poss Easy Impact 0119  
 Poss Blueblood 920  
 EF Commando 1366#  
 Baldrige Isabel Y69  
 Bruns Top Cut 373#  
 Erica of Ellston L5

CED	BW	WW	YW	SC	HP	MILK	DOC		
9	0.3	80	136	0.64	14.8	32	27		
CLAW	ANGLE	PAP	CW	MARB	RE	FAT	\$M	\$B	\$C
0.40	0.50	2.55	70	0.99	0.95	0.027	87	180	327

EPDs are an average of the sire and dam.

**12D**

# Connealy Craftsman x 813F

DUE FEBRUARY 4, 2023

*Pregnancy*

Sitz Resilient 10208  
 Connealy Craftsman  
 Black Cathy of Conanga 8521

Baldrige 38 Special  
 Moon Creek Erica of RR 813F  
 Erica of Ellston R65

Sitz Stellar 726D  
 Sitz Miss Burgess 1856  
 Connealy Niobrara 5451  
 Black Carla of Conanga 450  
 EF Commando 1366#  
 Baldrige Isabel Y69  
 Bruns Top Cut 373#  
 Erica of Ellston L5

CED	BW	WW	YW	SC	HP	MILK	DOC		
10	0.9	79.5	139	0.69	15.1	36.5	24		
CLAW	ANGLE	PAP	CW	MARB	RE	FAT	\$M	\$B	\$C
0.41	0.47	1.21	67	0.99	1.01	0.019	91	180	324

EPDs are an average of the sire and dam.



CONNELLY CRAFTSMAN Sire of Lot 12D - The new \$500,000 ST Genetics and Select Sires purchase who is a leader for Claw, MB, and Indexes with an outcross pedigree.

# DVAuction

Broadcasting Real-Time Auctions

*Watch and Bid Live!*

The sale will be broadcast live on DV Auction.com. Please register to bid at least 24 hours in advance of the sale. Videos will be available approximately two weeks prior to sale day.

# Lots 13A-15

Baldrige Clover G1002 was our headliner donor in last year's sale selling for \$18,000 to Jocko Valley in MT. A full sister to G1002 sold in the Baldrige Performance Angus Female sale in 2022 for \$17,000. She is a flush sister to Byergo Hart Maternal Power sold for \$40,000 in the 2021 Midland Bull Test Sale to Harts in SD. In 2020 the top selling bull at Midland was a maternal brother to Clover 150. The sire side of Lots 13-15 are maternal, phenotype, and big EPD's in one package. This will be a great cow family to tap into that is outside the box from most breeders.



BALDRIDGE CLOVER G1002 Donor Dam of Lots 13A-13B



**13A** MOON CREEK CLOVER K1431

## **13A** Moon Creek Clover K1431

COW | REG 20347244 | DOB 01/02/22 | TATTOO K1431

Cherry Creek Land Grant  
 Connealy Clarity  
 Breshie of Conanga 6988  
 Spring Cove Reno 4021  
 Baldrige Clover G1002  
 Byergo Clover 150

K C F Bennett Homestead#  
 Cherry Crk Eva B27 M  
 Connealy Confidence Plus#  
 Brelly of Conanga 367  
 KM Broken Bow 002#  
 Spring Cove Liza 021  
 SydGen C C & 7#  
 Byergo Clover 850

CED	BW	WW	YW	SC	HP	MILK	DOC										
8	0.7	89	163	0.48	15.6	24	33										
		2%	1%		15%		2%										
CLAW	ANGLE	PAP	CW	MARB	RE	FAT	\$M	\$B	SC								
0.45	0.57	5.58	85	0.91	0.87	-0.026	83	205	349								
30%			1%	20%	20%	10%	10%	1%	1%								
CED	BW	WW	YW	DMI	YH	SC	DOC	HP	CEM	MLK	MW	MH	CW	MRB	RE	FAT	TEND
18	17	10	2	96	58	49	4	8	79	70	15	36	3	17	22	16	50

ANGUSGS



BYERGO CLOVER 150 Granddam of Lots 13A-15

## **13B** Moon Creek Clover J1169

COW | REG 20122598 | DOB 05/20/21 | TATTOO J1169

Koupals B&B Identity#  
 Mill Brae Identified 4031#  
 Mill Brae Pro Blackcap 1092  
 Spring Cove Reno 4021  
 Baldrige Clover G1002  
 Byergo Clover 150

Sitz Upward 307R#  
 B&B Erica 605#  
 GAR-EGL Protege#  
 Mill Brae FL Blackcap 5002  
 KM Broken Bow 002#  
 Spring Cove Liza 021  
 SydGen C C & 7#  
 Byergo Clover 850

CED	BW	WW	YW	SC	HP	MILK	DOC										
10	-0.8	72	126	0.33	13.4	24	9										
20%	15%	20%	20%														
CLAW	ANGLE	PAP	CW	MARB	RE	FAT	\$M	\$B	SC								
0.37	0.46	4.44	58	1.33	0.78	0.028	84	183	321								
10%			25%	3%	30%		10%	5%	2%								
CED	BW	WW	YW	DMI	YH	SC	DOC	HP	CEM	MLK	MW	MH	CW	MRB	RE	FAT	TEND
3	2	55	47	68	63	89	87	26	32	74	83	71	43	3	43	77	73

ANGUSGS





## Moon Creek Clover J1119

14

COW | REG 20064156 | DOB 05/14/21 | TATTOO J1119

Poss Easy Impact 0119  
 Baldridge Alternative E125  
 Baldridge Blackbird A030  
 Spring Cove Reno 4021  
 Baldridge Clover G1008  
 Byergo Clover 150

Poss Total Impact 745#  
 Poss Elmaretta 736  
 Hoover Dam#  
 Baldridge Blackbird X89  
 KM Broken Bow 002#  
 Spring Cove Liza 021  
 SydGen C C & 7#  
 Byergo Clover 850

CED	BW	WW	YW	SC	HP	MILK	DOC										
7	2.7	74	135	1.17	12.7	17	22										
		15%	10%	30%													
CLAW	ANGLE	PAP	CW	MARB	RE	FAT	\$M	\$B	\$C								
0.42	0.41	1.88	73	1.08	1.05	-0.020	51	207	319								
		20%	15%	5%	10%	5%	15%	1%	2%								
CED	BW	WW	YW	DMI	YH	SC	DOC	HP	CEM	MLK	MW	MH	CW	MRB	RE	FAT	TEND
31	64	34	12	84	39	26	24	30	17	90	8	9	13	12	6	13	98

ANGUSGS



BALDRIDGE ALTERNATIVE E125 Sire of Lot 14

## Moon Creek Clover J1155

15

COW | REG 20096683 | DOB 05/30/21 | TATTOO J1155

Hoover No Doubt  
 E G Eyes Onyou  
 Baldridge Isabel D275  
 Crouthamel Protocol 3022  
 Baldridge Clover 842F  
 Byergo Clover 150

Mogck Bullseye#  
 Miss Blackcap Ellston J2  
 HAYNES Outright 452#  
 Baldridge Isabel Y69  
 CCC Merritt 030  
 CCC Lady Rain 932#  
 SydGen C C & 7#  
 Byergo Clover 850

CED	BW	WW	YW	SC	HP	MILK	DOC										
2	3.3	84	163	1.03	8.6	27	29										
		4%	1%	10%													
CLAW	ANGLE	PAP	CW	MARB	RE	FAT	\$M	\$B	\$C								
0.51	0.48	3.87	87	0.93	0.77	-0.003	25	213	301								
		1%	20%	30%	30%	1%	5%										
CED	BW	WW	YW	DMI	YH	SC	DOC	HP	CEM	MLK	MW	MH	CW	MRB	RE	FAT	TEND
82	84	6	1	96	9	41	7	76	43	25	1	1	1	17	11	19	88

ANGUSGS

## Moon Creek Clover H1135

15A

COW | REG 19924491 | DOB 05/15/20 | TATTOO H1135

S A V Technique 5120  
 Penz Prevail  
 Penz Forever Lady 5619  
 SydGen C C & 7#  
 Byergo Clover 150  
 Byergo Clover 850

A A R Ten X 7008 S A#  
 S A V Blackcap May 3501  
 S A V Platinum 0010#  
 Penz Forever Lady 3211  
 S A F Connection#  
 SydGen Forever Lady 4087  
 LCC New Standard#  
 Byergo Clover 513

CED	BW	WW	YW	SC	HP	MILK	DOC										
4	1.3	75	139	0.85	15.3	27	17										
		15%	20%	20%													
CLAW	ANGLE	PAP	CW	MARB	RE	FAT	\$M	\$B	\$C								
0.66	0.55	0.72	70	0.79	0.98	0.013	42	188	286								
		10%	10%	4%	10%												
CED	BW	WW	YW	DMI	YH	SC	DOC	HP	CEM	MLK	MW	MH	CW	MRB	RE	FAT	TEND
58	44	15	6	92	6	38	70	15	19	47	3	3	5	29	7	56	33

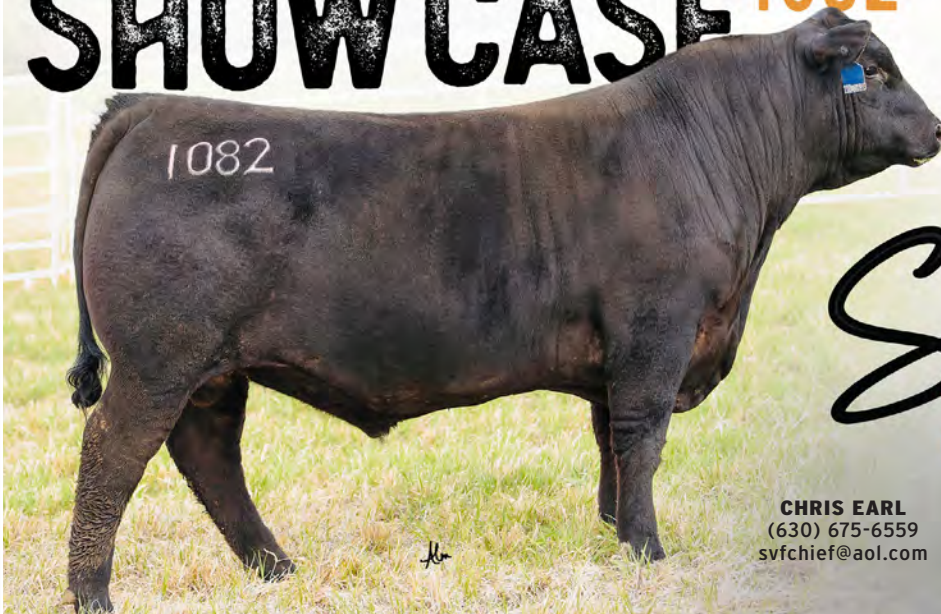
ANGUSGS

Due soon to sire group 1 (Baldridge Vista, Baldridge Harmony H093, Woodhill Legend B5-G103)

**HART** One of the elite phenotypes and outcross bulls of the 2022 SALE season!

# SHOW CASE 1082

Musgrave 316 Exclusive  
 X  
 Connealy Cavalry 1149



CED	BW	WW	YW	MLK	MRB	RE	\$M	\$B	\$C
9	-0.2	89	156	24	1.21	0.87	77	191	325

**SOURCE**  
 MATTHEW 6:19-21

CHECK OUT CK6SOURCE.COM

CHRIS EARL  
 (630) 675-6559  
 svfchief@aol.com

WES TIEMANN  
 (816) 244-4462  
 mrtiemann@outlook.com

KODY FLEEMAN  
 (573) 881-0117  
 k.fleeman@outlook.com





16

BALDRIDGE PRATISSA G1178

**16** **Baldrige Pratissa G1178**

COW | REG 19604353 | DOB 04/27/19 | TATTOO G1178

Connealy Confidence 0100#  
 Connealy Confidence Plus#  
 Elbanna of Conanga 1209  
 G A R Prophet#  
 Baldrige Pratissa B170  
 Baldrige Pratissa W165

Connealy Tobin  
 Becka Gala of Conanga 8281  
 Connealy Consensus#  
 Elbasta of Conanga 9703  
 C R A Bextor 872 5205 608#  
 G A R Objective 1885  
 GAR-EGL Protege#  
 Baldrige Pratissa S4

CED	BW	WW	YW	SC	HP	MILK	DOC
9	2.2	79	134	0.39	11.5	32	33
25%		3%	5%			15%	1%

CLAW	ANGLE	PAP	CW	MARB	RE	FAT	\$M	\$B	\$C
0.57	0.49	2.95	59	0.90	0.87	0.019	95	169	314
		10%	15%	10%		1%	10%	1%	

CED	BW	WW	YW	DMI	YH	SC	DOC	HP	CEM	MLK	MW	MH	CW	MRB	RE	FAT	TEND
36	72	21	49	54	82	70	5	39	30	35	91	88	29	23	20	59	63

ANGUSGS

*Sells open*

**16A** **Moon Creek Pratissa J1330**

COW | REG 20172756 | DOB 05/16/21 | TATTOO J1330

A A R Ten X 7008 S A#  
 Gardens Cache  
 Green Garden Rita K078  
 Connealy Confidence Plus#  
 Baldrige Pratissa G1178  
 Baldrige Pratissa B170

Mytty In Focus#  
 A A R Lady Kelton 5551#  
 Gardens Wave#  
 Green Garden Rita D076 S1  
 Connealy Confidence 0100#  
 Elbanna of Conanga 1209  
 G A R Prophet#  
 Baldrige Pratissa W165

CED	BW	WW	YW	SC	HP	MILK	DOC
6	2.0	74	130	1.63	12.1	26	31
15%		15%	15%	10%			4%

CLAW	ANGLE	PAP	CW	MARB	RE	FAT	\$M	\$B	\$C
0.40	0.47	1.02	49	1.09	1.02	0.018	89	169	308
15%			10%	10%		3%	15%	4%	

CED	BW	WW	YW	DMI	YH	SC	DOC	HP	CEM	MLK	MW	MH	CW	MRB	RE	FAT	TEND
51	68	12	27	82	67	9	7	40	52	35	55	80	23	15	5	57	41

ANGUSGS



BALDRIDGE PRATISSA B170 Dam of Lot 16 and 17  
 Granddam of Lot 16A



BALDRIDGE FORECASTER Full Brother to the Dam  
 of Lot 16 at Alta Genetics and Diamond J Ranch

## Lots 16-16A

Baldrige Pratissa G1178 comes from a mountain of good being a direct daughter of Pratissa B170 whose 20 sons in the 2021 Baldrige Performance Angus Bull sale average \$10,075. B170 is a full sister to Baldrige Forecaster and will be as famous as her dam W165 when it's all said and done. This female exemplifies the top 1% of \$Maternal by pedigree, phenotype, and production.





18

MOON CREEK PRATISSA H1134

**17 Moon Creek Pratissa H1087**

COW | REG 19932037 | DOB 05/18/20 | TATTOO H1087

Connealy Capitalist 028#  
LD Capitalist 316  
LD Dixie Erica 2053  
G A R Prophet#  
Baldrige Pratissa B170  
Baldrige Pratissa W165

S A V Final Answer 0035#  
Prides Pita of Conanga 8821  
C A Future Direction 5321#  
LD Dixie Erica Oar 0853  
C R A Bextor 872 5205 608#  
G A R Objective 1885  
GAR-EGL Protege#  
Baldrige Pratissa S4

CED	BW	WW	YW	SC	HP	MILK	DOC										
5	2.1	81	140	0.49	9.7	22	32										
		10%	10%				3%										
CLAW	ANGLE	PAP	CW	MARB	RE	FAT	\$M	\$B	\$C								
0.47	0.35	3.30	58	1.21	0.66	0.046	81	174	307								
	4%		25%	5%			10%	10%	4%								
CED	BW	WW	YW	DMI	YH	SC	DOC	HP	CEM	MLK	MW	MH	CW	MRB	RE	FAT	TEND
45	62	28	24	86	78	67	2	49	11	84	58	67	43	10	68	95	8

ANGUSGS

**18 Moon Creek Pratissa H1134**

COW | REG 19949237 | DOB 05/19/20 | TATTOO H1134

Mogck Bullseye#  
Hoover No Doubt  
Miss Blackcap Ellston J2  
Poss Bodyguard  
Baldrige Pratissa E159  
Baldrige Pratissa C762#

MOGCK Sure Shot#  
Mogck Mary 1255  
SydGen C C & 7#  
Miss Blackcap Ellston D154#  
PA Safeguard 021#  
Poss Eirca 8502#  
Connealy Consensus 578B  
Baldrige Pratissa W165

CED	BW	WW	YW	SC	HP	MILK	DOC										
10	0.9	69	127	1.60	15.3	27	31										
		25%	20%	15%	20%		4%										
CLAW	ANGLE	PAP	CW	MARB	RE	FAT	\$M	\$B	\$C								
0.47	0.45	2.81	69	0.91	0.92	0.018	92	185	332								
			10%	20%	15%		10%	5%	1%								
CED	BW	WW	YW	DMI	YH	SC	DOC	HP	CEM	MLK	MW	MH	CW	MRB	RE	FAT	TEND
18	31	30	15	94	82	11	8	7	11	45	62	80	7	14	9	54	33

ANGUSGS

Sells open with a Moon Creek Harmony K1529 bull calf at side.

**18A Moon Creek Pratissa K1502**

COW | REG 20374616 | DOB 05/30/22 | TATTOO K1502

Poss Maverick  
Poss Rawhide  
Poss Blueblood 6502  
Hoover No Doubt  
Moon Creek Pratissa H1134  
Baldrige Pratissa E159

Basin Payweight 1682#  
Poss Pride 5163  
Poss Easy Impact 0119  
Poss Blueblood 920  
Mogck Bullseye#  
Miss Blackcap Ellston J2  
Poss Bodyguard  
Baldrige Pratissa C762#

CED	BW	WW	YW	SC	HP	MILK	DOC										
12	0.1	76	132	1.42	14.5	28	31										
		25%	15%	20%	25%		4%										
CLAW	ANGLE	PAP	CW	MARB	RE	FAT	\$M	\$B	\$C								
0.48	0.45	0.36	70	1.05	0.90	0.037	90	196	344								
		30%	10%	15%	15%		2%	2%	1%								
CED	BW	WW	YW	DMI	YH	SC	DOC	HP	CEM	MLK	MW	MH	CW	MRB	RE	FAT	TEND

ANGUSGS

Genomic data pending.

**18B Moon Creek Pratissa K1512**

COW | REG 20373236 | DOB 05/30/22 | TATTOO K1512

Mill Brae Identified 4031#  
HCC Whitewater 9010  
Rock Creek Sara 6066  
Hoover No Doubt  
Moon Creek Pratissa H1134  
Baldrige Pratissa E159

Koupals B&B Identity#  
Mill Brae Pro Blackcap 1092  
Silveiras Conversion 8064  
H P C A Confidence A322  
Mogck Bullseye#  
Miss Blackcap Ellston J2  
Poss Bodyguard  
Baldrige Pratissa C762#

CED	BW	WW	YW	SC	HP	MILK	DOC										
10	0.6	71	129	1.28	14.4	29	26										
		20%	15%	25%	25%	25%	15%										
CLAW	ANGLE	PAP	CW	MARB	RE	FAT	\$M	\$B	\$C								
0.54	0.44	2.37	61	1.14	1.11	0.029	84	187	327								
		30%	20%	10%	3%		10%	4%	1%								
CED	BW	WW	YW	DMI	YH	SC	DOC	HP	CEM	MLK	MW	MH	CW	MRB	RE	FAT	TEND

ANGUSGS

Genomic data pending.



BALDRIDGE HEADLINER H739 Full Brother to Lot 17



BALDRIDGE PRATISSA E159 Dam of Lot 18



BALDRIDGE PRATISSA C762 Granddam of Lot 18



# Lots 19-20

The Mademoiselle cow family would be a great new addition for a herd coming back through the SydGen program in Missouri to the late 70's. Excellent eye appeal and correctness of structure will come along with these two girls. Don't overlook these two as they are the only Mademoiselles we are turning loose of.



MOON CREEK MADEMOISELLE J1123 Dam of Lot 19

## 19

**Poss Remington x J1123**

SELLING 4 EMBRYOS

Connealy Clarity  
Poss Remington  
Poss Blueblood 6502  
S S Enforcer E812  
Moon Creek Mademoiselle J1123  
Baldrige Mademoiselle G1152

Embryos

Cherry Creek Land Grant							
Breshie of Conanga 6988							
Poss Easy Impact 0119							
Poss Blueblood 920							
SydGen Enhance							
S S Miss Daybreak K011 3K17#							
Baldrige Hombre D748							
Baldrige Mademoiselle 637D							

CED	BW	WW	YW	SC	HP	MILK	DOC
5	0.9	88.5	156.5	0.63	13.2	25	31

CLAW	ANGLE	PAP	CW	MARB	RE	FAT	SM	SB	SC
0.41	0.45	4.11	79.5	0.99	1.00	0.002	79	198	342

*EPDs are an average of the sire and dam.*

## 20

**Moon Creek Mademoiselle K1412**

COW | REG 20347379 | DOB 02/10/22 | TATTOO K1412

Tehama Upward Y238  
Tehama Tahoe B767  
Tehama Mary Blackbird Y684  
Baldrige Xpand X227  
Baldrige Mademoiselle 825B  
SydGen Mademoiselle 1447

Embryos

Sitz Upward 307R#							
Tehama Elite Blackbird T735							
S A V Final Answer 0035#							
Tehama Mary Blackbird T073							
Hoover Dam#							
Baldrige Blackbird N10#							
SydGen 928 Destination 5420#							
SydGen Mademoiselle 7707#							

CED	BW	WW	YW	SC	HP	MILK	DOC
10	-0.4	64	112	0.89	11.9	30	22

CLAW	ANGLE	PAP	CW	MARB	RE	FAT	SM	SB	SC
0.41	0.49	0.53	48	0.95	0.68	0.018	78	153	276

CED	BW	WW	YW	DMI	YH	SC	DOC	HP	CEM	MLK	MW	MH	CW	MRB	RE	FAT	TEND
33	33	20	35	94	37	45	22	35	73	22	55	67	23	15	37	76	32

**ANGUSGS**



POSS REMINGTON Sire of Lot 19



BALDRIDGE ALTERNATIVE E125 Sire of Lot 20, 23-29





21

MOON CREEK BLACKCAP K1409



BALDRIDGE BLACKCAP A246 Granddam of Lot 21

## Moon Creek Blackcap K1409

21

COW | REG 20347277 | DOB 02/01/22 | TATTOO K1409

Tehama Upward Y238

Tehama Tahoe B767#

Tehama Mary Blackbird Y684

Basin Payweight 1682#

Baldrige Blackcap 712E

Baldrige Blackcap A246

Sitz Upward 307R#

Tehama Elite Blackbird T735

S A V Final Answer 0035#

Tehama Mary Blackbird T073

Basin Payweight 006S#

21AR O Lass 7017

CB Block Party 156#

Baldrige Blackcap W70

GED	BW	WW	YW	SC	HP	MILK	DOC											
14	-0.9	73	126	1.09	11.7	38	25											
3%	10%	15%	20%			2%	20%											
CLAW	ANGLE	PAP	CW	MARB	RE	FAT	\$M	\$B	SC									
0.48	0.49	2.73	59	0.91	0.65	0.037	87	161	296									
			25%	20%			4%	20%	10%									
GED	BW	WW	YW	DMI	YH	SC	DOC	HP	CEN	MLK	MW	MH	CW	MRB	RE	FAT	TEND	ANGUS
2	6	25	37	80	83	45	18	44	46	14	74	82	29	29	40	82	97	ANGUS

This neat little heifer combines maternal greats like Tahoe and 1682 together on top of the Baldrige Blackcap cow family, where this heifer's grandmother was a prominent donor with 52 genomic profiles now serving as a donor for 2S Angus, MO.



**22**

# Moon Creek Blackcap J1321

**COW | REG 20102817 | DOB 05/16/21 | TATTOO J1321**

SydGen Enhance  
**S S Enforcer E812**  
 S S Miss Daybreak K011 3K17#  
 Baldrige Alternative E125  
**Baldrige Blackcap G1163**  
 Baldrige Blackcap 643D

SydGen Exceed 3223  
 SydGen Rita 2618  
 S S Daybreak K011  
 S S Miss Incentive X19  
 Poss Easy Impact 0119  
 Baldrige Blackbird A030  
 MCC Essential 4069  
 Baldrige Blackcap Mary 820B

CED	BW	WW	YW	SC	HP	MILK	DOC
10	-0.3	66	124	1.63	12.6	29	21
20%	20%		25%	10%		25%	

CLAW	ANGLE	PAP	CW	MARB	RE	FAT	\$M	\$B	\$C
0.55	0.51	-1.04	51	1.23	0.79	-0.005	71	184	310
		10%		5%	25%	30%	30%	5%	3%

CED	BW	WW	YW	DMI	YH	SC	DOC	HP	CEM	MLK	MW	MH	CW	MRB	RE	FAT	TEND
5	5	83	48	47	87	9	54	45	25	29	85	81	73	9	43	33	48

A great blend of the high growth Enforcer to the carcass and phenotype enhancer Alternative on the bottom side. This heifer goes back to the productive and prolific Baldrige Blackcap Mary 2006.

**23**

# Moon Creek Blackbird J1272

**COW | REG 20183949 | DOB 02/23/21 | TATTOO J1272**

Poss Easy Impact 0119  
**Baldrige Alternative E125**  
 Baldrige Blackbird A030  
 Brockmere Trinity 3013  
**Baldrige Blackbird G1024**  
 Baldrige Blackbird 934C

Poss Total Impact 745#  
 Poss Elmaretta 736  
 Hoover Dam#  
 Baldrige Blackbird X89  
 SydGen Trust 6228#  
 Brockmere Everelda 1061#  
 EF Commando 1366#  
 Baldrige Blackbird X726

CED	BW	WW	YW	SC	HP	MILK	DOC
9	-0.2	81	143	0.68	8.1	24	17
30%	20%	10%	10%				

CLAW	ANGLE	PAP	CW	MARB	RE	FAT	\$M	\$B	\$C
0.48	0.45	-0.12	73	1.15	0.55	0.048	41	186	282
		20%	5%	10%				4%	15%

CED	BW	WW	YW	DMI	YH	SC	DOC	HP	CEM	MLK	MW	MH	CW	MRB	RE	FAT	TEND
19	10	29	20	94	100	42	49	80	41	54	13	80	26	9	76	91	26

**All to Poss Ratified on 6-29-22.** This female ranks in the top 1% of the breed for the new Hair Shed EPD. Along with her excellent PAP and Carcass values this nice Alternative daughter brings some of the extras to the table.

**24**

# Moon Creek Blackbird H1128

**COW | REG 19927443 | DOB 05/18/20 | TATTOO H1128**

Poss Easy Impact 0119  
**Baldrige Alternative E125**  
 Baldrige Blackbird A030  
 Baldrige 8 Ball  
**Baldrige Blackbird 860F**  
 Baldrige Blackbird 932C

Poss Total Impact 745#  
 Poss Elmaretta 736  
 Hoover Dam#  
 Baldrige Blackbird X89  
 EF Commando 1366#  
 Baldrige Isabel Y69  
 EF Commando 1366#  
 Baldrige Blackbird X726

CED	BW	WW	YW	SC	HP	MILK	DOC
8	-0.2	79	138	0.69	13.0	20	20
	20%	10%	10%				

CLAW	ANGLE	PAP	CW	MARB	RE	FAT	\$M	\$B	\$C
0.45	0.45	1.81	74	1.15	0.82	0.034	72	196	326
		30%	5%	10%	25%		25%	2%	2%

CED	BW	WW	YW	DMI	YH	SC	DOC	HP	CEM	MLK	MW	MH	CW	MRB	RE	FAT	TEND
42	29	17	14	92	93	38	42	34	38	88	33	70	8	7	32	84	59

A great blend of the high growth Enforcer to the carcass and phenotype enhancer Alternative on the bottom side. This heifer goes back to the productive and prolific Baldrige Blackcap Mary 2006.

**25**

# Baldrige Prospector G1127

**COW | REG 19677064 | DOB 05/30/19 | TATTOO G1127**

Poss Easy Impact 0119  
**Baldrige Alternative E125**  
 Baldrige Blackbird A030  
 MCC Essential 4069  
**Baldrige Prospector G21D**  
 Baldrige Prospector 116Y

Poss Total Impact 745#  
 Poss Elmaretta 736  
 Hoover Dam#  
 Baldrige Blackbird X89  
 Connealy Earnan 076E#  
 MCC SuperMama 0139#  
 G A R Predestined#  
 Baldrige Prospector S558

CED	BW	WW	YW	SC	HP	MILK	DOC
8	1.5	70	127	0.71	10.1	18	17
		25%	20%				

CLAW	ANGLE	PAP	CW	MARB	RE	FAT	\$M	\$B	\$C
0.45	0.50	0.74	66	1.10	0.79	0.008	49	193	299
		30%	15%	10%	25%			3%	10%

CED	BW	WW	YW	DMI	YH	SC	DOC	HP	CEM	MLK	MW	MH	CW	MRB	RE	FAT	TEND
56	62	16	16	84	42	21	69	55	11	85	10	21	6	10	27	58	93

**Due soon to sire group 1**  
 (Baldrige Vista, Baldrige Harmony H093, Woodhill Legend B5-G103)

**26**

# Baldrige Blackbird G1161

**COW | REG 19601640 | DOB 06/17/19 | TATTOO G1161**

Poss Easy Impact 0119  
**Baldrige Alternative E125**  
 Baldrige Blackbird A030  
 GAR-EGL Protege#  
**Baldrige Blackbird X726**  
 Baldrige Blackbird N10#

Poss Total Impact 745#  
 Poss Elmaretta 736  
 Hoover Dam#  
 Baldrige Blackbird X89  
 Rito 112 of 2536 Rito 616#  
 L B 6807 Isabel 339  
 Sitz Alliance 6595#  
 Baldrige Blackbird L592

CED	BW	WW	YW	SC	HP	MILK	DOC
5	1.8	64	122	1.46	10.3	16	29
			25%	15%			10%

CLAW	ANGLE	PAP	CW	MARB	RE	FAT	\$M	\$B	\$C
0.40	0.41	2.43	69	0.94	0.80	0.026	48	195	301
	15%	15%	10%	20%	25%			2%	5%

CED	BW	WW	YW	DMI	YH	SC	DOC	HP	CEM	MLK	MW	MH	CW	MRB	RE	FAT	TEND
43	29	56	17	70	66	8	6	61	11	88	14	31	12	22	38	78	48

A great blend of the high growth Enforcer to the carcass and phenotype enhancer Alternative on the bottom side. This heifer goes back to the productive and prolific Baldrige Blackcap Mary 2006.

**27**

# Baldrige PrimroseLady G1085

**COW | REG 19598720 | DOB 07/01/19 | TATTOO G1085**

Poss Easy Impact 0119  
**Baldrige Alternative E125**  
 Baldrige Blackbird A030  
 Baldrige 8 Ball  
**Baldrige Primrose Lady 739E**  
 Baldrige Primrose Lady 836B

Poss Total Impact 745#  
 Poss Elmaretta 736  
 Hoover Dam#  
 Baldrige Blackbird X89  
 EF Commando 1366#  
 Baldrige Isabel Y69  
 G A R Prophet#  
 Baldrige Primrose Lady U241

CED	BW	WW	YW	SC	HP	MILK	DOC
11	0.3	75	137	0.64	4.7	20	7
	15%	25%	5%	4%			

CLAW	ANGLE	PAP	CW	MARB	RE	FAT	\$M	\$B	\$C
0.49	0.52	0.73	66	0.99	1.12	0.003	46	184	285
		3%	10%	1%				2%	5%

CED	BW	WW	YW	DMI	YH	SC	DOC	HP	CEM	MLK	MW	MH	CW	MRB	RE	FAT	TEND
36	50	26	19	99	82	28	91	98	34	90	61	66	21	17	5	41	100

A great blend of the high growth Enforcer to the carcass and phenotype enhancer Alternative on the bottom side. This heifer goes back to the productive and prolific Baldrige Blackcap Mary 2006.

Sale  
 Contacts



**KOREY KRULL**  
 712-330-5459  
 MOONCREEKANGUSFARM.COM



**SALE STAFF**  
 CHRIS EARL 630-675-6559  
 WES TIEMANN 816-244-4462  
 KODY FLEEMAN 5753-881-0117

**28****Moon Creek Eroline H110**

COW | REG 19929004 | DOB 05/24/20 | TATTOO H110

S A V Technique 5120  
 Penz Prevail  
 Penz Forever Lady 5619  
 baldrige Xpand x743  
 Baldrige Erroline 838B  
 Baldrige Erroline X269

A A R Ten X 7008 S A#  
 S A V Blackcap May 3501  
 S A V Platinum 0010#  
 Penz Forever Lady 3211  
 Hoover Dam#  
 Baldrige Queen S87  
 Woodhill Mainline#  
 S V F Erroline P033

CED	BW	WW	YW	SC	HP	MILK	DOC										
11	0.9	75	133	0.96	12.4	32	21										
15%		15%	15%			15%											
CLAW	ANGLE	PAP	CW	MARB	RE	FAT	\$M	\$B	\$C								
0.68	0.38	1.55	70	0.46	0.95	-0.006	61	161	270								
10%			10%		10%	30%		20%	20%								
CED	BW	WW	YW	DMI	YH	SC	DOC	HP	CEM	MLK	MW	MH	CW	MRB	RE	FAT	TEND
14	24	23	30	91	43	51	24	29	24	21	29	32	11	64	17	31	63

Sells open. AI bred on 6-18-22. Bull calf at side #20381780.

**30****Baldrige June 865F**

COW | REG 19511022 | DOB 06/04/18 | TATTOO 865F

baldrige Xpand x743  
 Baldrige Colonel C251  
 Baldrige Isabel Y69  
 Baldrige Waylon W34#  
 Baldrige June 835B  
 Baldrige June X401

Hoover Dam#  
 Baldrige Queen S87  
 Styles Upgrade J59#  
 Baldrige Isabel T935  
 GAR-EGL Protege#  
 Baldrige Blackcap T163  
 TC Aberdeen 759#  
 River Hills June U387

CED	BW	WW	YW	SC	HP	MILK	DOC										
3	2.8	80	150	1.33	12.5	20	25										
		3%	1%	15%			10%										
CLAW	ANGLE	PAP	CW	MARB	RE	FAT	\$M	\$B	\$C								
0.43	0.40	5.30	51	0.70	0.48	-0.010	63	144	250								
20%	10%		20%	25%		20%		25%	25%								
CED	BW	WW	YW	DMI	YH	SC	DOC	HP	CEM	MLK	MW	MH	CW	MRB	RE	FAT	TEND
69	67	19	4	89	64	22	14	47	46	90	13	42	37	44	75	25	57

Sells open. AI bred on 5-28-22. Heifer calf at side #20381779.

**29****Moon Creek Blackcap H1105**

COW | REG 19931845 | DOB 05/21/20 | TATTOO H1105

Connealy Capitalist 028#  
 LD Capitalist 316  
 LD Dixie Erica 2053  
 Baldrige Hombre D748  
 Baldrige Blackcap Mary 863F  
 Baldrige Blackcap Mary 626D

S A V Final Answer 0035#  
 Prides Pita of Conanga 8821  
 C A Future Direction 5321#  
 LD Dixie Erica Oar 0853  
 Mill Bar Hickok 7242#  
 Baldrige Isabel Y69  
 Basin Payweight 1682#  
 Baldrige Blackcap Mary 924

CED	BW	WW	YW	SC	HP	MILK	DOC										
8	0.8	74	129	0.55	11.3	28	19										
		15%	15%														
CLAW	ANGLE	PAP	CW	MARB	RE	FAT	\$M	\$B	\$C								
0.53	0.48	0.86	63	0.55	0.79	0.030	63	158	268								
			15%		25%			25%	25%								
CED	BW	WW	YW	DMI	YH	SC	DOC	HP	CEM	MLK	MW	MH	CW	MRB	RE	FAT	TEND
41	52	15	20	60	69	50	42	38	88	33	28	59	15	68	25	73	16

Calved 7/8/22 bull calf by sire group 1

(Baldrige Vista, Baldrige Harmony H093, Woodhill Legend B5-G103)

**31****Moon Creek June H1075**

COW | REG 19958667 | DOB 06/01/20 | TATTOO H1075

Connealy Capitalist 028#  
 LD Capitalist 316  
 LD Dixie Erica 2053  
 Baldrige Colonel C251  
 Baldrige June 865F  
 Baldrige June 835B

S A V Final Answer 0035#  
 Prides Pita of Conanga 8821  
 C A Future Direction 5321#  
 LD Dixie Erica Oar 0853  
 baldrige Xpand x743  
 Baldrige Isabel Y69  
 Baldrige Waylon W34#  
 Baldrige June X401

CED	BW	WW	YW	SC	HP	MILK	DOC										
10	0.3	81	147	0.41	12.4	31	14										
		30%	10%	4%			15%										
CLAW	ANGLE	PAP	CW	MARB	RE	FAT	\$M	\$B	\$C								
0.44	0.37	2.50	67	0.78	0.67	0.019	72	162	282								
	25%	10%		10%		25%		20%	15%								
CED	BW	WW	YW	DMI	YH	SC	DOC	HP	CEM	MLK	MW	MH	CW	MRB	RE	FAT	TEND
11	16	15	8	96	17	67	70	39	28	16	28	21	10	37	51	68	24

Due soon to sire group 1

(Baldrige Vista, Baldrige Harmony H093, Woodhill Legend B5-G103)



Annual Production Sale

**AUGUST 5, 2022 - 6 PM**

Sale Address: 2041 Jay Ave, George, IA 51237

WATCH AND BID LIVE ON DV AUCTION!

Cattle will sell on video screen at the sale site.

**DVAuction**  
 Broadcasting Real-Time Auctions

CK6 CONSULTING  
358 Laguna Madre Rd  
Maxwell, NM 87728

FIRST CLASS MAIL

DO NOT DELAY



*Annual Production Sale*

**AUGUST 5, 2022**

6 PM CST | 2041 JAY AVENUE | GEORGE, IOWA 51237

Catalog designed by  
**HONOR AG**  
branding  
402-841-4216

[MOONCREEKANGUSFARM.COM](http://MOONCREEKANGUSFARM.COM)

**DVAuction**  
Broadcasting Real-Time Auctions